



Cromwell Road, SW5

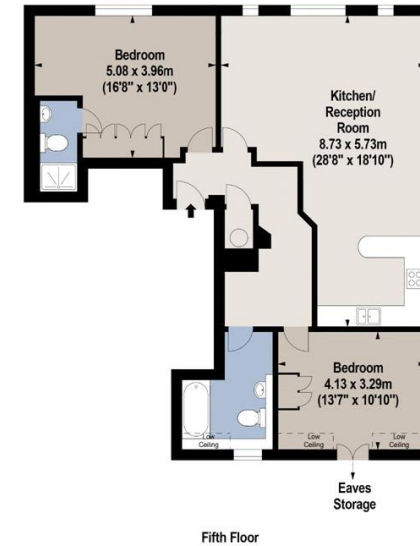
Cromwell Road, SW5

Set on the top floor of a well maintained Victorian conversion, the apartment comprises of two double bedrooms, open plan living room and kitchen, en-suite bathroom and additional shower room.

Conveniently located close to Earls Court Underground and just a few minutes walk from High Street Kensington and the buzz of the Old Brompton Road.

Council Tax Band: F
Deposit: £4,250

Asking price: £850 pw



For Identification Purposes Only. Not To Scale. © www.totalvista.uk 2023

**Frazer House,
Cromwell Road, SW5**

Approx. Gross Internal Area
95.07 Sq M - 1023 Sq Ft

 TOTALVISTA

020 7096 9476

contact@landstones.co.uk

Whilst every effort is made to ensure the accuracy of these details, it should be noted that the measurements are approximate only. Floorplans are for representation purposes only and prepared according to the RICS Code of Measuring Practice by our floorplan provider. Therefore, the layout of doors, windows and rooms are approximate and should be regarded as such by any prospective tenant.