



Edith Grove, SW10

Edith Grove, SW10

A modern three bedroom apartment set over the ground floor of this attractive mansion block in Chelsea.

Located moments away from the many shops, bars and restaurants of Kings Road and Fulham Road.

Deposit: £5,820

Garden details: Private Garden

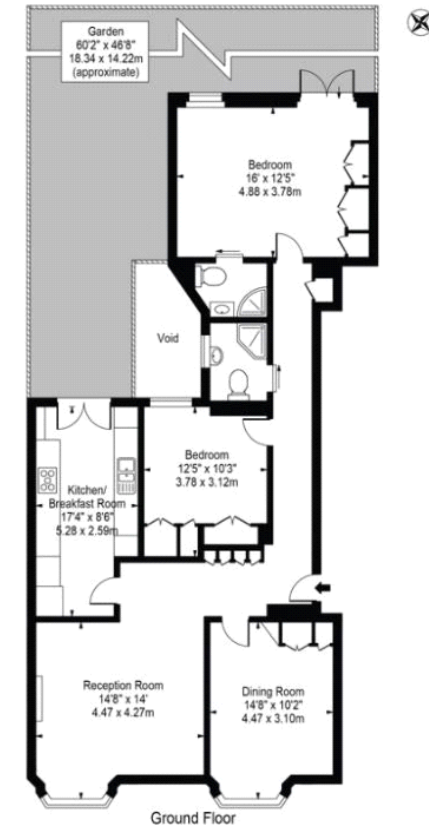
Garden, High Ceilings & Wood Floors

Asking price: £970 pw



Editha Mansions

Approx. Gross Internal Area 1066 Sq Ft - 99.03 Sq M



For Illustration Purposes Only - Not To Scale

This floor plan should be used as a general outline for guidance only and does not constitute in whole or in part an offer or contract. Any intending purchaser or lessee should satisfy themselves by inspection, searches, enquiries and full survey as to the correctness of each statement. Any areas, measurements or distances quoted are approximate and should not be used to value a property or be the basis of any sale or let.

020 7096 9476

contact@landstones.co.uk

Whilst every effort is made to ensure the accuracy of these details, it should be noted that the measurements are approximate only. Floorplans are for representation purposes only and prepared according to the RICS Code of Measuring Practice by our floorplan provider. Therefore, the layout of doors, windows and rooms are approximate and should be regarded as such by any prospective tenant.