



The Little Boltons, SW10

The Little Boltons, SW10

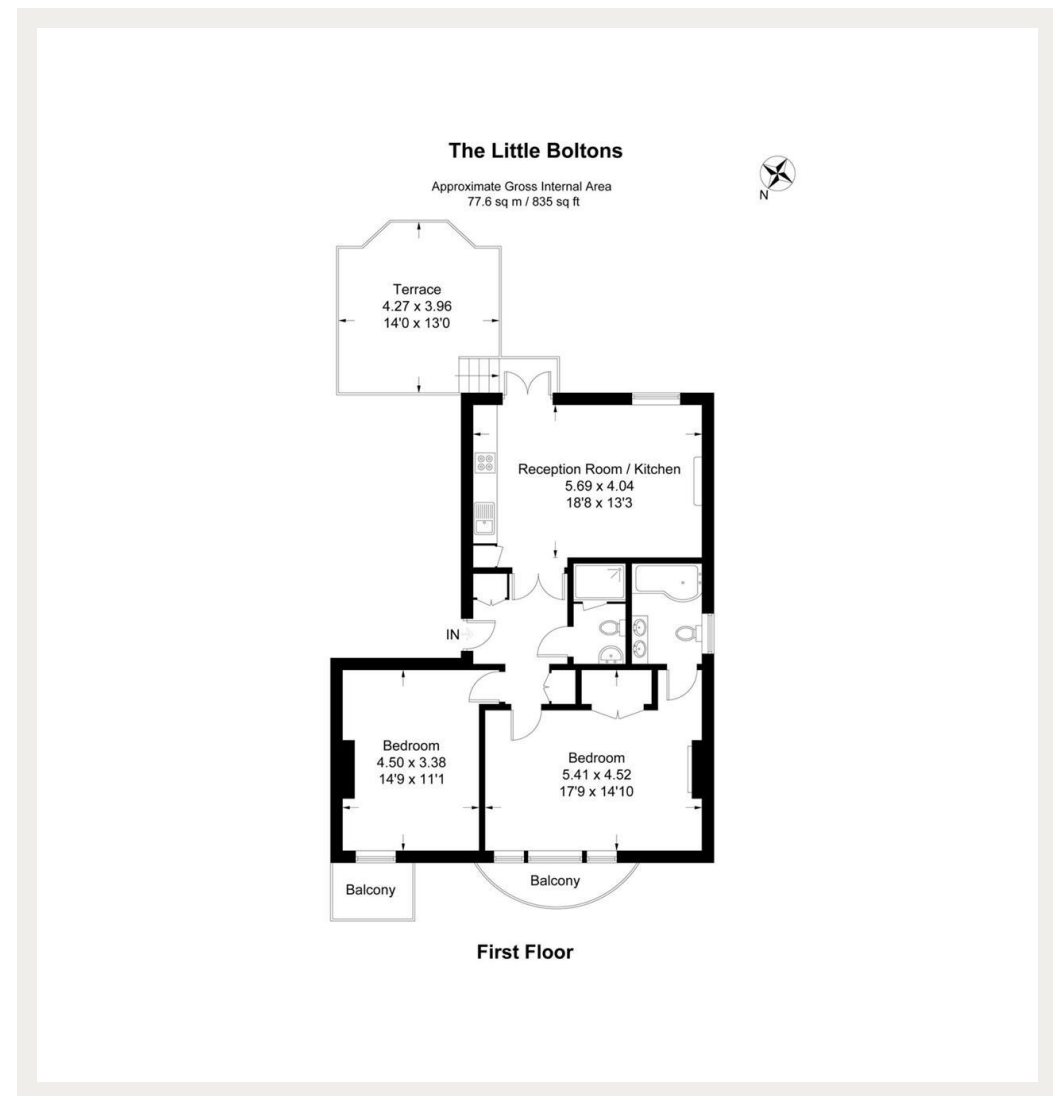
A newly refurbished two bedroom, two bathroom apartment with it's own terrace located on this picturesque Chelsea street.

The Little Boltons is one of Chelsea's premier residential streets and is approximately 0.6 miles away from Gloucester Road tube station and 0.8 miles away from South Kensington tube station (all distances given are approximate). The Little Bolton's forms part of the Boltons Conservation Area originally built by the Gunter Family between 1850 and 1870 and was designed by Godwin. The Little Boltons houses were designed with excellent proportions, large windows and high ceilings.

Council Tax Band: G
Deposit: £7,500

High Ceilings & Wood Floors, Newly Refurbished, Outdoor Space

Asking price: £1,250 pw



020 7096 9476

contact@landstones.co.uk

Whilst every effort is made to ensure the accuracy of these details, it should be noted that the measurements are approximate only. Floorplans are for representation purposes only and prepared according to the RICS Code of Measuring Practice by our floorplan provider. Therefore, the layout of doors, windows and rooms are approximate and should be regarded as such by any prospective tenant.