



Lockgate Road, SW6



## Lockgate Road, SW6

Stunning two bedroom, two bathroom apartment situated in the popular Chelsea Creek Development with the River Thames and Imperial Wharf Station close by.

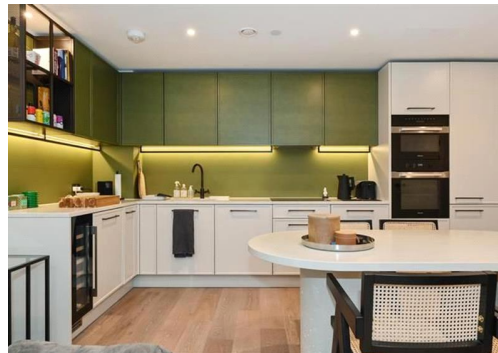
Residents will benefit from luxury amenities including Gym, Swimming Pool & Spa, Private Cinema, Bar, Dining room & Private meeting rooms, access to the Sky Lounge roof terrace with 360 views over the capital and 24 hour Concierge.

Chelsea Creek is conveniently located moments from Chelsea Harbour & the River Thames, offering rich history and a flourishing mixture of boutique shops and restaurants alongside easy access to District Line. Walking distance to Imperial Wharf Overground Station.

Council Tax Band: G  
Deposit: £4,250

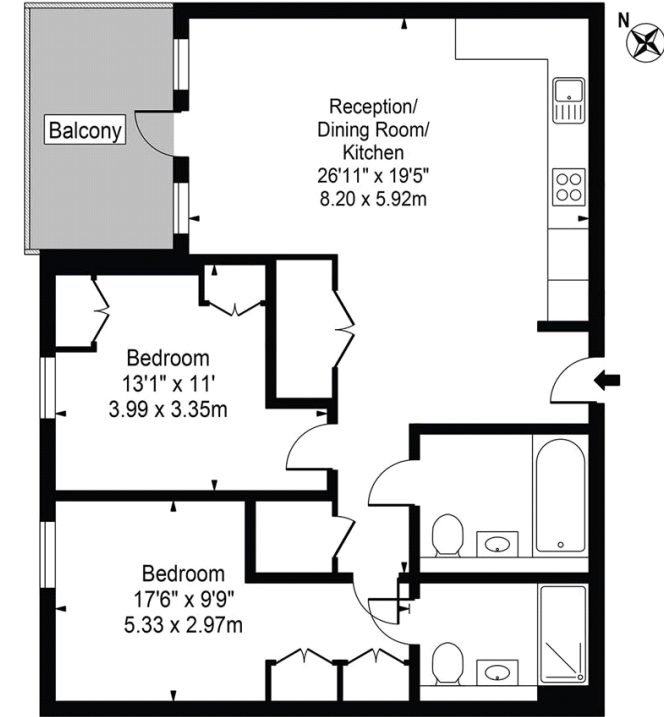
24/7 Concierge and Security, Access to Roof Terrace, Business Centre, Cinema Room, Gym, Pool and Sauna, Air Conditioning

**Asking price:** £850 pw



## Savoy House

Approx. Gross Internal Area 783 Sq Ft - 72.74 Sq M



### Third Floor

For Illustration Purposes Only - Not To Scale

This floor plan should be used as a general outline for guidance only and does not constitute in whole or in part an offer or contract. Any intending purchaser or lessee should satisfy themselves by inspection, searches, enquiries and full survey as to the correctness of each statement. Any areas, measurements or distances quoted are approximate and should not be used to value a property or be the basis of any sale or let.

020 7096 9476

contact@landstones.co.uk

Whilst every effort is made to ensure the accuracy of these details, it should be noted that the measurements are approximate only. Floorplans are for representation purposes only and prepared according to the RICS Code of Measuring Practice by our floorplan provider. Therefore, the layout of doors, windows and rooms are approximate and should be regarded as such by any prospective tenant.