



Hyde Park Gate, SW7

Hyde Park Gate, SW7

A truly spectacular seven bedroom family house of ambassadorial proportions in this exclusive location opposite Kensington Gardens that offers a private driveway and garage on one of London's most sought-after streets.

Hyde Park Gate is one of the most prestigious addresses in London. The name is shared by two parallel roads leading south from the park. One of these was home to several historical figures, including Winston Churchill and Virginia Woolf. Today the streets are lined with several embassies, as well as private homes and mansion flats.

Council Tax Band: H

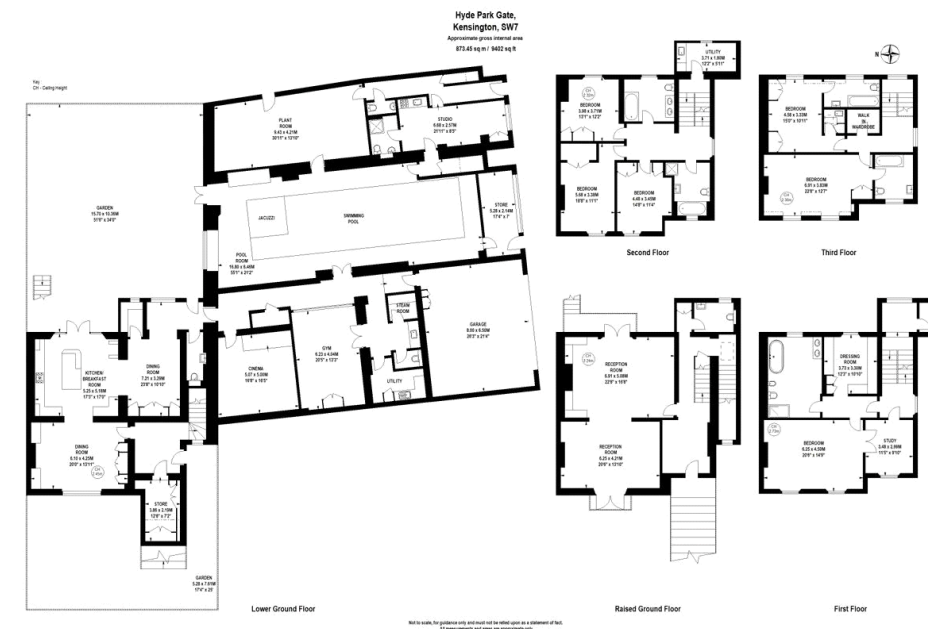
Deposit: £90,000

Parking options: Off Street

Garden details: Private Garden

Garden, Gym, Swimming Pool, Private Garage

Asking price: £15,000 pw



020 7096 9476

contact@landstones.co.uk

Whilst every effort is made to ensure the accuracy of these details, it should be noted that the measurements are approximate only. Floorplans are for representation purposes only and prepared according to the RICS Code of Measuring Practice by our floorplan provider. Therefore, the layout of doors, windows and rooms are approximate and should be regarded as such by any prospective tenant.