



Knightsbridge, SW1X

## Knightsbridge, SW1X

Set on the fourth floor (with lift) of this magnificent red brick mansion building, this three bedroom apartment has been finished to an excellent standard and presented in beautiful condition, there is a wealth of natural light throughout and ample entertaining space.

In the heart of Knightsbridge, Wellington Court is superbly located to a wonderful selection of restaurants and boutique shops, as well as the world class amenities of neighbouring Mayfair and Chelsea, with the greenery of Hyde Park on its door step.

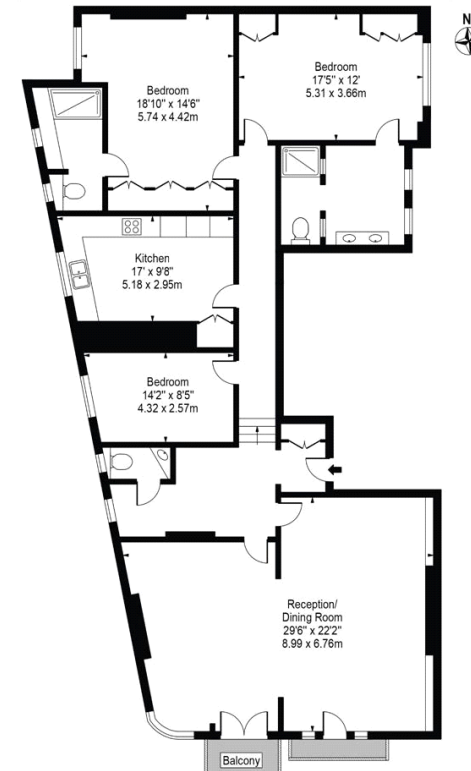
Council Tax Band: H  
Deposit: £17,940

24/7 Concierge, Lift Access

**Asking price:** £2,990 pw



### Wellington Court Approx. Gross Internal Area 1841 Sq Ft - 171.03 Sq M



Fourth Floor

For Illustration Purposes Only - Not To Scale

This floor plan should be used as a general outline for guidance only and does not constitute in whole or in part an offer or contract. Any intending purchaser or lessee should satisfy themselves by inspection, searches, enquiries and full survey as to the correctness of each statement. Any areas, measurements or distances quoted are approximate and should not be used to value a property or be the basis of any sale or let.

020 7096 9476

contact@landstones.co.uk

Whilst every effort is made to ensure the accuracy of these details, it should be noted that the measurements are approximate only. Floorplans are for representation purposes only and prepared according to the RICS Code of Measuring Practice by our floorplan provider. Therefore, the layout of doors, windows and rooms are approximate and should be regarded as such by any prospective tenant.