



Lansdowne Crescent, W11



## Lansdowne Crescent, W11

Offered on a Short Let basis, this outstanding duplex three bedroom apartment offers a naturally bright and contemporary interiors, a private garden and direct access to a beautiful communal garden and a highly sought after location.

Lansdowne Crescent is one of the most attractive roads in Notting Hill and Holland Park with communal gardens on both sides of the road. It runs north from Holland Park Underground station on Holland Park Avenue into a crescent joining Ladbroke Grove.

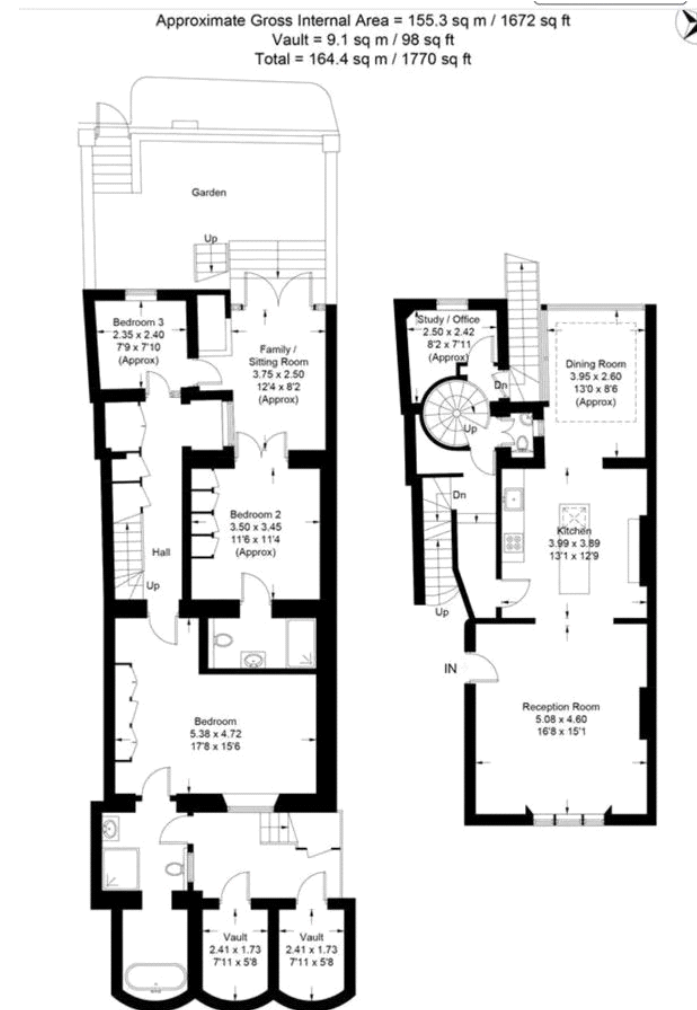
Council Tax Band: F

Deposit: £10,000

Garden details: Private Garden

Communal Garden, Pet Friendly, Private Garden, Including All Bills, Short Let

**Asking price:** £3,400 pw



020 7096 9476

contact@landstones.co.uk

Whilst every effort is made to ensure the accuracy of these details, it should be noted that the measurements are approximate only. Floorplans are for representation purposes only and prepared according to the RICS Code of Measuring Practice by our floorplan provider. Therefore, the layout of doors, windows and rooms are approximate and should be regarded as such by any prospective tenant.