



Earls Court Road, SW5

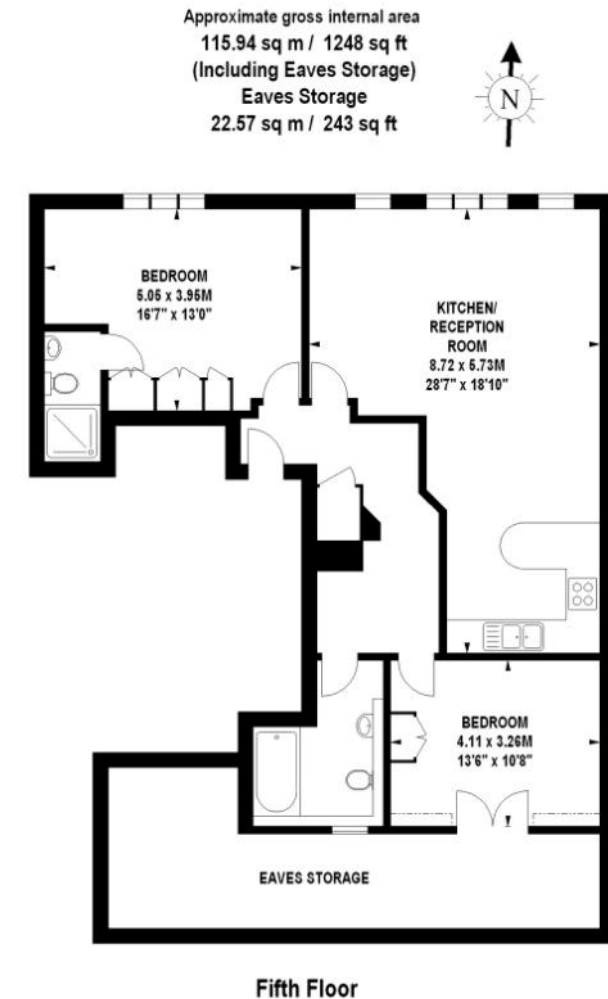
Earls Court Road, SW5

A spacious and bright two bedroom, two bathroom apartment set on the fifth floor (with lift) of a purpose built portered block in the heart of Earls Court with wooden floors throughout.

Sullivan court is a moments walk to Earls Court Underground Station (District and Piccadilly lines) and also within easy reach of all the shops, bars and restaurants the area has to offer. Holland Park is also a short walk away.

Council Tax Band: G
Deposit: £4,375

Asking price: £850



020 7096 9476

contact@landstones.co.uk

Whilst every effort is made to ensure the accuracy of these details, it should be noted that the measurements are approximate only. Floorplans are for representation purposes only and prepared according to the RICS Code of Measuring Practice by our floorplan provider. Therefore, the layout of doors, windows and rooms are approximate and should be regarded as such by any prospective tenant.