



Lexham Gardens, W8

## Lexham Gardens, W8

A bright and spacious two double bedroom lateral apartment set on the raised ground floor within this beautiful white stucco-fronted period conversion building.

Lexham Gardens is one of the most desirable street in Kensington, moments away from High Street Kensington and Holland Park. The property benefits further from its close proximity to the transport links of Gloucester Road, Earl's Court and High Street Kensington.

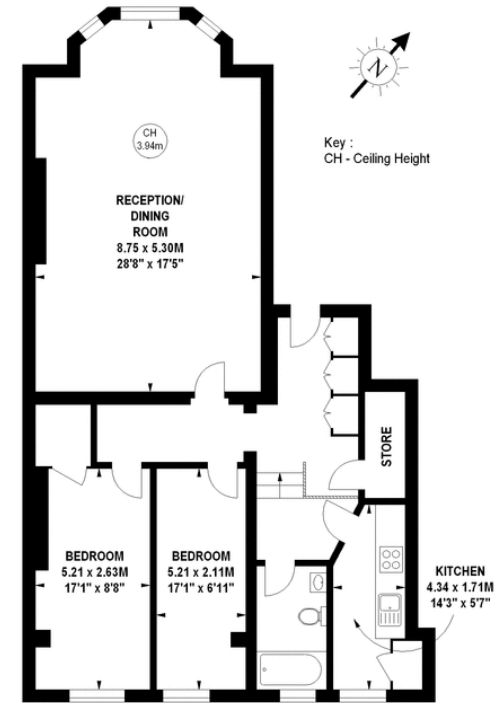
Deposit: £3,975

Asking price: £795



## Imperial Court, W8

Approximate gross internal area  
1169 sq ft / 108.60 sq m



### Ground Floor

The floor plan is not to scale and measurements and areas shown are approximate and therefore should be used for illustrative purposes only. The plan has been prepared in accordance with the RICS code of Measuring Practice and whilst we have confidence in the information produced, it must not be relied on. If there is any aspect of particular importance, you should carry out or commission your own inspection of the property.  
Copyright of FeaturePRO.

020 7096 9476

contact@landstones.co.uk

Whilst every effort is made to ensure the accuracy of these details, it should be noted that the measurements are approximate only. Floorplans are for representation purposes only and prepared according to the RICS Code of Measuring Practice by our floorplan provider. Therefore, the layout of doors, windows and rooms are approximate and should be regarded as such by any prospective tenant.