



York Terrace West, NW1

## York Terrace West, NW1

A stunning top floor apartment (with lift) in a private gated development with 24 hour portorage and sweeping views over Regents Park.

Situated on the Marylebone side of the park, York Terrace West is well located for the boutique shops and restaurants of Marylebone High Street. St John's Wood High Street is also in close proximity.

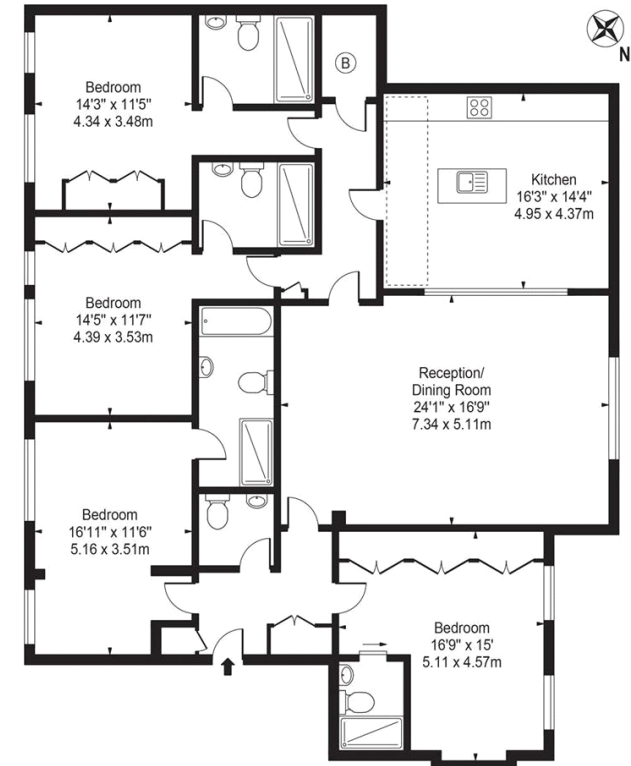
Council Tax Band: H  
Deposit: £18,000

24/7 Porter, Access To Communal Gardens, Air Conditioning, Views over Regents Park

**Asking price: £3,000**



### York Terrace West Approx. Gross Internal Area 1929 Sq Ft - 179.21 Sq M



Third Floor

For Illustration Purposes Only - Not To Scale

This floor plan should be used as a general outline for guidance only and does not constitute in whole or in part an offer or contract. Any intending purchaser or lessee should satisfy themselves by inspection, searches, enquiries and full survey as to the correctness of each statement. Any areas, measurements or distances quoted are approximate and should not be used to value a property or be the basis of any sale or let.

020 7096 9476

contact@landstones.co.uk

Whilst every effort is made to ensure the accuracy of these details, it should be noted that the measurements are approximate only. Floorplans are for representation purposes only and prepared according to the RICS Code of Measuring Practice by our floorplan provider. Therefore, the layout of doors, windows and rooms are approximate and should be regarded as such by any prospective tenant.