



Old Brompton Road, SW5

Old Brompton Road, SW5

A newly refurbished four bedroom lateral apartment in this prestigious portered mansion block with lift and communal gardens, the ideal family flat!

The apartment is within Bousfield catchment area and with easy access to Earls Court Road tube station as well as Gloucester Road. Both South Kensington and Chelsea are also within a short walk.

Council Tax Band: G
Deposit: £11,400

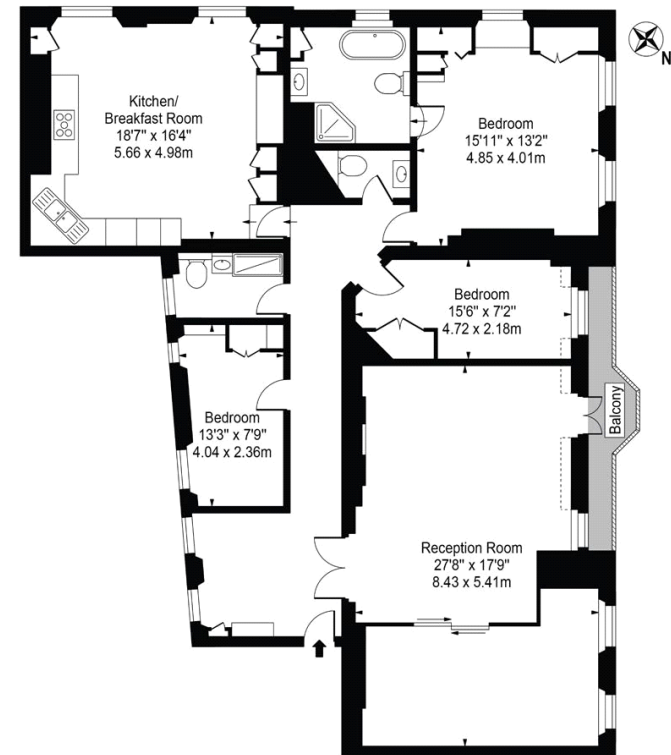
Communal Garden, Lift Access, Newly Redecorated ,
Porter

Asking price: £1,900



Coleherne Court, SW5

Approx. Gross Internal Area 1619 Sq Ft - 150.41 Sq M



Fourth Floor
For Illustration Purposes Only - Not To Scale

This floor plan should be used as a general outline for guidance only and does not constitute in whole or in part an offer or contract. Any intending purchaser or lessee should satisfy themselves by inspection, searches, enquiries and full survey as to the correctness of each statement. Any areas, measurements or distances quoted are approximate and should not be used to value a property or be the basis of any sale or let.

020 7096 9476

contact@landstones.co.uk

Whilst every effort is made to ensure the accuracy of these details, it should be noted that the measurements are approximate only. Floorplans are for representation purposes only and prepared according to the RICS Code of Measuring Practice by our floorplan provider. Therefore, the layout of doors, windows and rooms are approximate and should be regarded as such by any prospective tenant.