



Ledbury Road, W11

Ledbury Road, W11

Landstones are proud to bring to the market this brand newly refurbished, interior designed, best in class one bedroom apartment on Ledbury Road in the heart of Notting Hill.

Situated over the first floor of a period town house the apartment has been meticulously redesigned throughout. The open plan reception room leads out through French doors onto a portico balcony giving the room exceptional space and light.

The large double bedroom features an ensuite bathroom and walk in wardrobe. From the hallway the apartment has easy access to a large overhead storage locker perfect for suitcases and off season clothes.

Ledbury Road runs North from the busy shopping street of Westbourne Grove, just moment's walk from Daylesford Organic, Granger and many more. Portobello Road is also a short walk away. The closest tube station is Notting Hill Gate, Central, District and Circle Line.

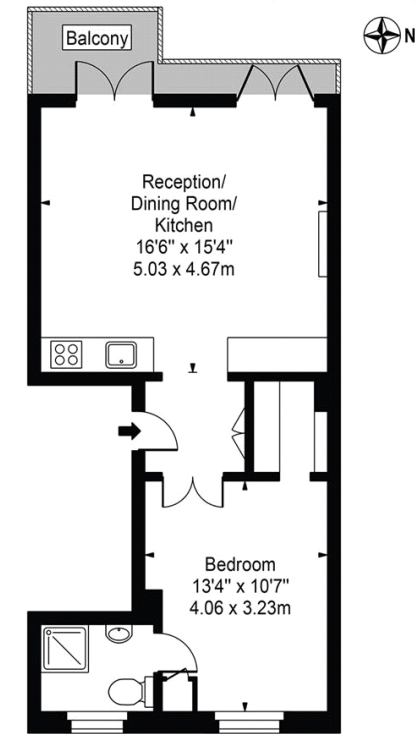
Tenure: Leasehold

Newly Renovated, High Ceilings, Wooden Floors, Open Plan Kitchen, Period Building, Private Balcony

Asking price: £1,100,000



Ledbury Road,
Notting Hill, W11 2AH
Approx. Gross Internal Area 526 Sq Ft - 48.87 Sq M



First Floor

For Illustration Purposes Only - Not To Scale

This floor plan should be used as a general outline for guidance only and does not constitute in whole or in part an offer or contract. Any intending purchaser or lessee should satisfy themselves by inspection, searches, enquiries and full survey as to the correctness of each statement. Any areas, measurements or distances quoted are approximate and should not be used to value a property or be the basis of any sale or let.

020 7096 9476

contact@landstones.co.uk

Whilst every effort is made to ensure the accuracy of these details, it should be noted that the measurements are approximate only. Floorplans are for representation purposes only and prepared according to the RICS Code of Measuring Practice by our floorplan provider. Therefore, the layout of doors, windows and rooms are approximate and should be regarded as such by any prospective purchaser. Any internal photographs are intended as a guide only and it should not be assumed that any of the furniture/fittings are included in any sale. Where shown, details of lease, ground rent and service charge are provided by the vendor and their accuracy cannot be guaranteed, as the information may not have been verified and further checks should be made either through your solicitor/conveyance. Where appliances, including central heating, are mentioned, it cannot be assumed that they are in working order, as they have not been tested. Please also note that wiring, plumbing and drains have not been checked.