



Old Brompton Road, SW5

Old Brompton Road, SW5

A newly redecorated, four-bedroom lateral apartment with an impressive double reception, this property has been finished to very high standards. A fully fitted modern kitchen with Miele appliances, a wine cooler and ample storage is a great plus. Situated on the second floor of this popular mansion block, the property benefits from sweeping views of arguably one of the finest communal gardens in Kensington and Chelsea. A quiet and peaceful location coupled with 24 hour portorage and a modern lift, make this property an ideal family home.

The apartment is within the Bousfield catchment area with easy access to Earls Court Road and Gloucester Road tube stations. Both South Kensington and Chelsea are also within a short walk.

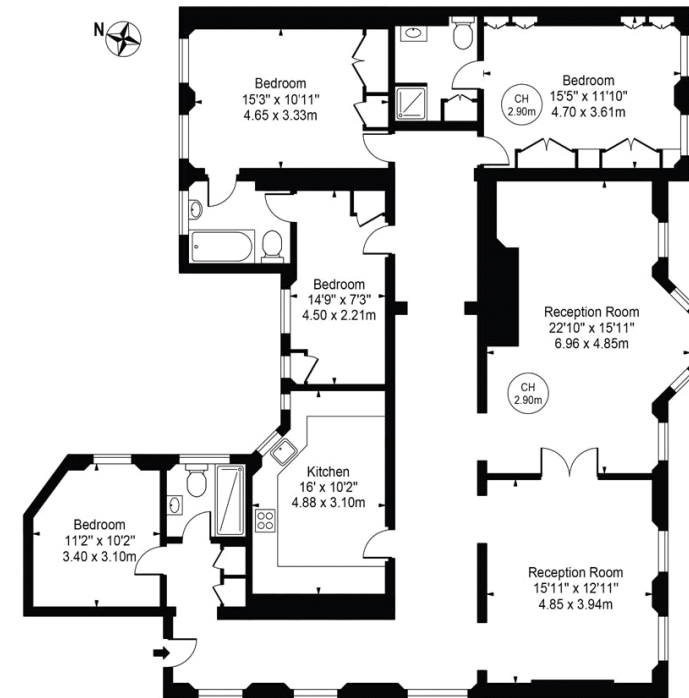
Council Tax Band: G
Deposit: £15,000

Communal Garden, Lift Access, Porter

Asking price: £2,500



Coleherne Court, Old Brompton Road, SW5 0EF Approx. Gross Internal Area 1960 Sq Ft - 182.09 Sq M



Second Floor
For Illustration Purposes Only - Not To Scale

This floor plan should be used as a general outline for guidance only and does not constitute in whole or in part an offer or contract. Any intending purchaser or lessee should satisfy themselves by inspection, searches, enquiries and full survey as to the correctness of each statement. Any areas, measurements or distances quoted are approximate and should not be used to value a property or be the basis of any sale or let.

020 7096 9476

contact@landstones.co.uk

Whilst every effort is made to ensure the accuracy of these details, it should be noted that the measurements are approximate only. Floorplans are for representation purposes only and prepared according to the RICS Code of Measuring Practice by our floorplan provider. Therefore, the layout of doors, windows and rooms are approximate and should be regarded as such by any prospective tenant.