



Collingham Place, SW5

Collingham Place, SW5

A bright and spacious four bedroom family home in very good condition throughout arranged over the second, third and fourth floor of this well maintained period conversion.

The property is entered on the second floor of the building, moving up onto the third floor you find a large eat in kitchen with double doors opening out onto a terrace, perfect for breakfast or entertaining.

The fourth floor of the building contains the spacious reception room with three large windows allowing for great views and a torrent of light into the rooms. You also find the master bedroom suite on this floor.

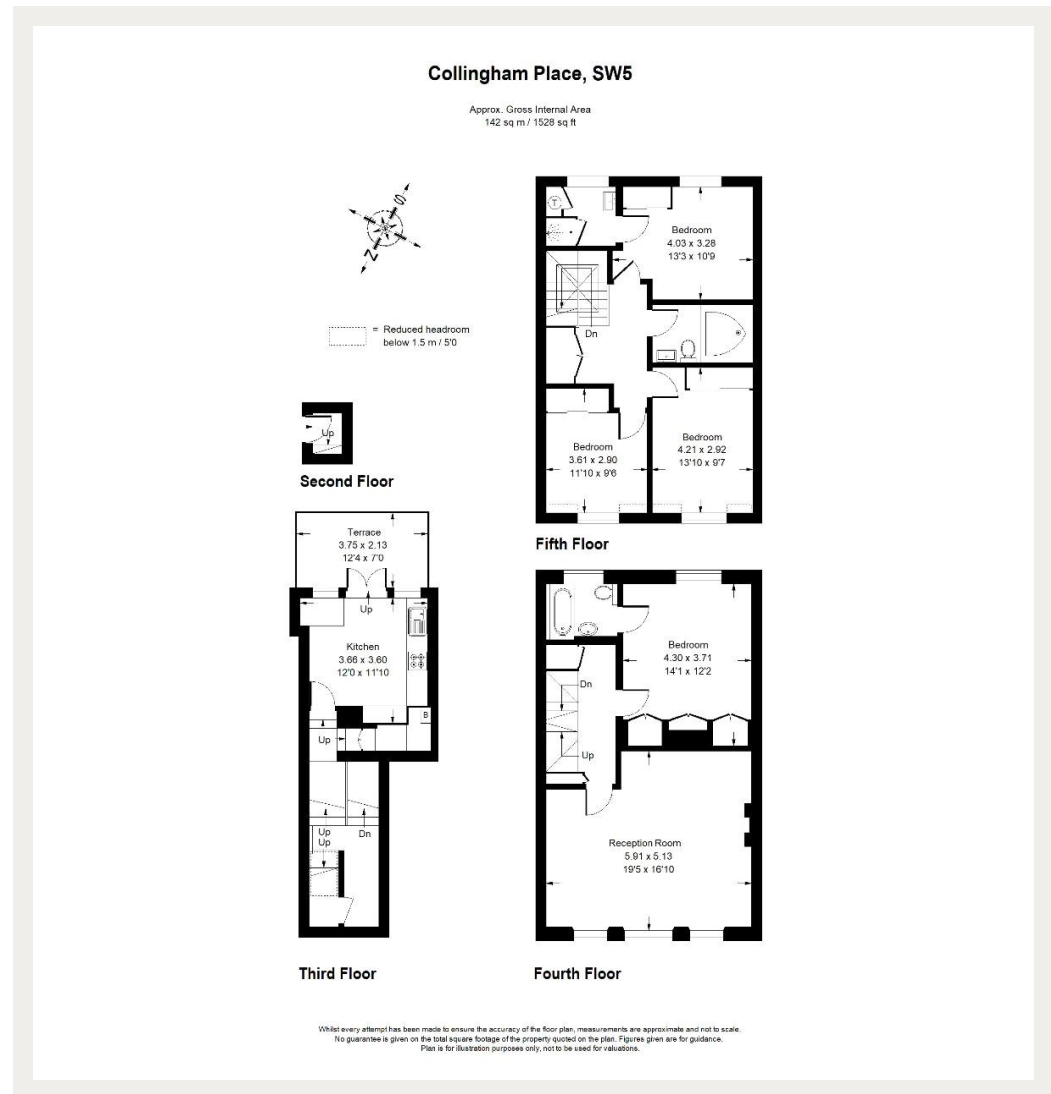
Moving up onto the family floor you find three further double bedrooms, one with en-suite and the family bathroom.

Ideally located between Gloucester Road and Earl's Court tube stations, also moments away from the many shops, bars and restaurants of Earl's Court and South Kensington.

Tenure: Share of Freehold

Outdoor Space, Roof Terrace, Separate Kitchen, Wooden Floors, Four Bedrooms

Asking price: £1,850,000



020 7096 9476

contact@landstones.co.uk

Whilst every effort is made to ensure the accuracy of these details, it should be noted that the measurements are approximate only. Floorplans are for representation purposes only and prepared according to the RICS Code of Measuring Practice by our floorplan provider. Therefore, the layout of doors, windows and rooms are approximate and should be regarded as such by any prospective purchaser. Any internal photographs are intended as a guide only and it should not be assumed that any of the furniture/fittings are included in any sale. Where shown, details of lease, ground rent and service charge are provided by the vendor and their accuracy cannot be guaranteed, as the information may not have been verified and further checks should be made either through your solicitor/conveyance. Where appliances, including central heating, are mentioned, it cannot be assumed that they are in working order, as they have not been tested. Please also note that wiring, plumbing and drains have not been checked.