



Melton Court, SW7

Melton Court, SW7

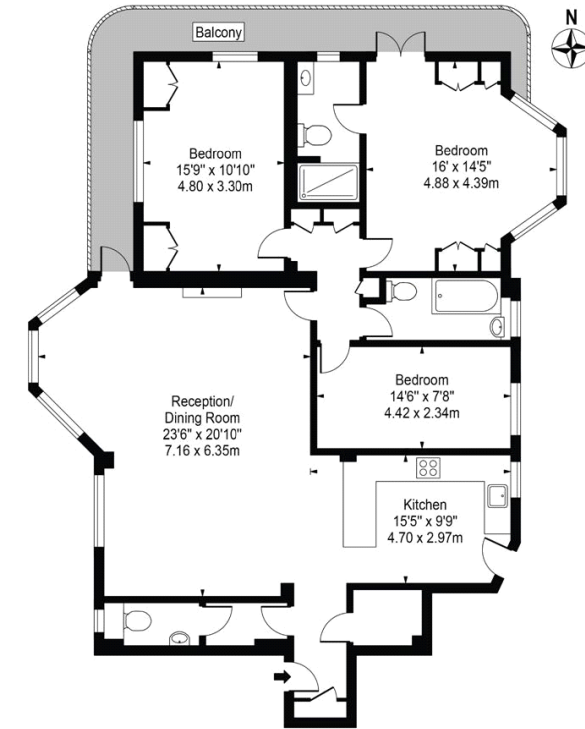
This brand newly refurbished three-bedroom flat in the heart of South Kensington offers the perfect blend of modern living and classic charm. The property has recently undergone a full back to brick renovation to include wooden floors with underfloor heating throughout, Arabascatto Oro Verde stone fireplace, Miele Kitchen appliances with Quooker tap and Microcement bathrooms. The property features a spacious living room with abundant natural light, a designated dining area, and a fully equipped bespoke Italian kitchen. Each of the bedrooms are comfortable and well-proportioned with the master bed having an ensuite bathroom, and ample built in storage space. The master bedroom also has access to the wrap around balcony. This apartment is perfect for a family or professional couple. The flat also benefits from two modern bathrooms and one guest WC providing the comfort and conveniences you need to make you feel at home.

The location is highly sought-after, situated in one of the most prestigious and attractive areas in London, South Kensington is known for its beautiful Victorian architecture, tree-lined streets and its proximity to some of London's most famous cultural landmarks, such as the Victoria and Albert Museum, the Natural History Museum, and the Science Museum. The area is also home to some of the most beautiful parks in London, including Hyde Park and Kensington Gardens, perfect for a morning run or an afternoon picnic.

South Kensington is also well-connected, with easy access to three underground stations, South Kensington, Gloucester Road and High Street Kensington, which offers excellent transportation links to the rest of London. Whether you're a professional looking for a chic city pad or a family seeking a comfortable home in a prime location, this flat is the perfect choice. The area is surrounded by a wide variety of shops, restaurants and bars, making it an ideal location for those who enjoy the bustling city life.



Melton Court,
South Kensington, SW7 3JQ
Approx. Gross Internal Area 1401 Sq Ft - 130.15 Sq M



For Illustration Purposes Only - Not To Scale

This floor plan should be used as a general outline for guidance only and does not constitute in whole or in part an offer or contract. Any intending purchaser or lessee should satisfy themselves by inspection, searches, enquiries and full survey as to the correctness of each statement. Any areas, measurements or distances quoted are approximate and should not be used to value a property or be the basis of any sale or let.

020 7096 9476

contact@landstones.co.uk

Whilst every effort is made to ensure the accuracy of these details, it should be noted that the measurements are approximate only. Floorplans are for representation purposes only and prepared according to the RICS Code of Measuring Practice by our floorplan provider. Therefore, the layout of doors, windows and rooms are approximate and should be regarded as such by any prospective tenant.