



Marloes Road, W8

Marloes Road, W8

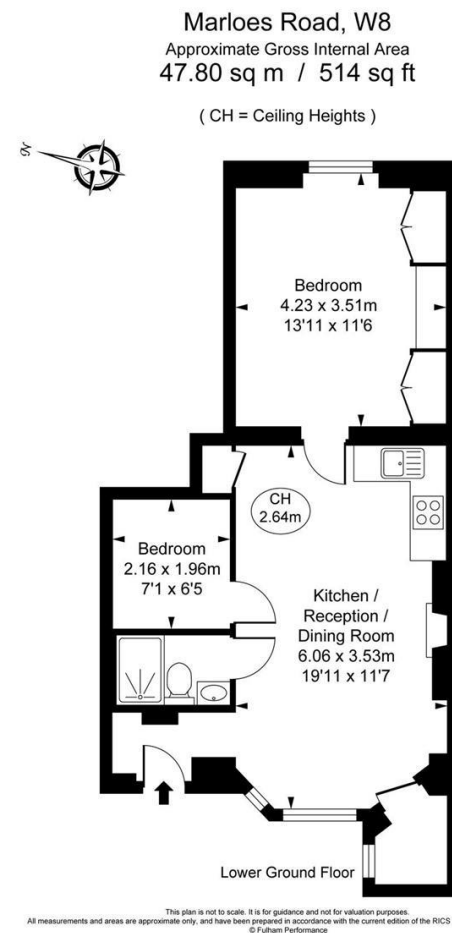
A two bedroom apartment set on the garden level within this attractive period building located moments away from both Holland Park and Hyde Park. Perfect property for sharers.

Situated in the heart of Kensington close to the many lively bars and restaurants. Kensington High Street and Earls Court underground stations are a short walk away.

Council Tax Band: G

Deposit: £2,625

Asking price: £525



020 7096 9476

contact@landstones.co.uk

Whilst every effort is made to ensure the accuracy of these details, it should be noted that the measurements are approximate only. Floorplans are for representation purposes only and prepared according to the RICS Code of Measuring Practice by our floorplan provider. Therefore, the layout of doors, windows and rooms are approximate and should be regarded as such by any prospective tenant.