



Harrington Road, SW7

Harrington Road, SW7

A modern and spacious two double bedroom apartment set on the sixth floor (with lift) of this well maintained block in the heart of South Kensington.

The flat comprises of a spacious reception room with a well-appointed open plan kitchen and panoramic views. There are two generous double bedrooms, one with en-suite bathroom and both with ample storage, there's a further family size bathroom.

Harrington Road is well located for a range of bars, restaurants and other shops and services surrounding South Kensington. The nearest underground station is South Kensington (Circle & District, Piccadilly lines).

Council Tax Band: F
Deposit: £4,800

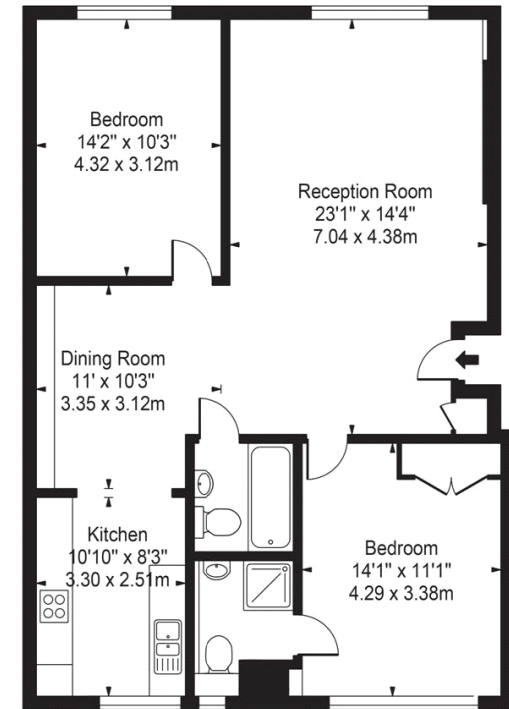
Panoramic Views, Pet Friendly, Lift Access, Heating & Hot Water Included

Asking price: £960



Petersham House, Harrington Road, SW7

Approx. Gross Internal Area 955 Sq Ft - 88.72 Sq M



Sixth Floor

For Illustration Purposes Only - Not To Scale

This floor plan should be used as a general outline for guidance only and does not constitute in whole or in part an offer or contract. Any intending purchaser or lessee should satisfy themselves by inspection, searches, enquiries and full survey as to the correctness of each statement. Any areas, measurements or distances quoted are approximate and should not be used to value a property or be the basis of any sale or let.

Whilst every effort is made to ensure the accuracy of these details, it should be noted that the measurements are approximate only. Floorplans are for representation purposes only and prepared according to the RICS Code of Measuring Practice by our floorplan provider. Therefore, the layout of doors, windows and rooms are approximate and should be regarded as such by any prospective tenant.

020 7096 9476

contact@landstones.co.uk