



Cornwall Gardens, SW7

Cornwall Gardens, SW7

A light, interior designed two bedroom, two bathroom apartment finished to the highest standard set on the top floor within this beautiful period building.

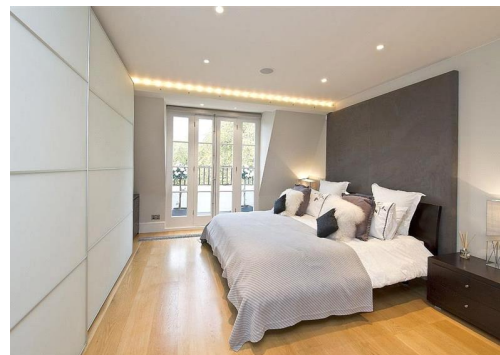
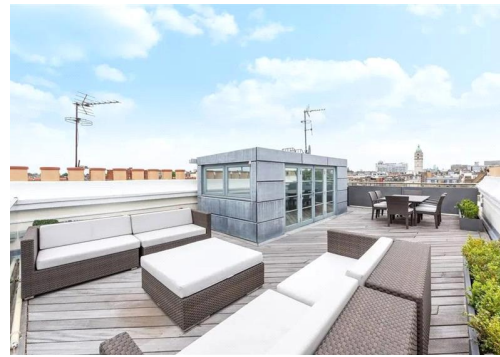
Cornwall Gardens is walking distance from Gloucester Road tube station, as well as all the shops, restaurants and amenities of South Kensington.

Hyde Park is also a short walk away.

Council Tax Band: G
Deposit: £11,400

Two Double Bedrooms, Two Bathrooms, Wooden Floors, Private Terrace

Asking price: £1,900



FLAT 7
4 CORNWALL GARDENS SW7
APPROX. GROSS INTERNAL AREA *
980 Ft² - 91.04 M²
Illustration For Identification Only, Not to Scale
All Calculations include Any/All Areas Under 1.5m Head Height.
*As Defined by RICS - Code of Measuring Practice

The floor plans show the layout of the fifth and sixth floors. The fifth floor includes a Living Room (15'6" x 13'3" / 4.72 x 4.04m), a Kitchen (11'6" x 7'6" / 3.51 x 2.29m), and two Bedrooms (14'6" x 13'3" / 4.42 x 4.04m and 14'9" x 7'6" / 4.50 x 2.29m). The sixth floor features a large bedroom (15'6" x 7' / 4.72 x 2.13m) and a Bathroom (BBO). A north arrow is located in the top right corner of the plan area.

FIFTH FLOOR SIXTH FLOOR

BKR
www.bkrfloorplans.co.uk
T: 0845 257 2023
© BKR 2014

020 7096 9476

contact@landstones.co.uk

Whilst every effort is made to ensure the accuracy of these details, it should be noted that the measurements are approximate only. Floorplans are for representation purposes only and prepared according to the RICS Code of Measuring Practice by our floorplan provider. Therefore, the layout of doors, windows and rooms are approximate and should be regarded as such by any prospective tenant.