



Ashburn Place, SW7

# Ashburn Place, SW7

Offered on a Short-Let basis, this modern and contemporary split level two bedroom apartment boasts high ceilings and a fabulous open plan eat-in kitchen within a handsome building in South Kensington.

Ideally located close to the shops and restaurants in South Kensington and Gloucester Road including Waitrose supermarket, La Bottega coffee shop and Hummingbird café. Ashburn Place is a short walk to both Gloucester Road and South Kensington underground stations.

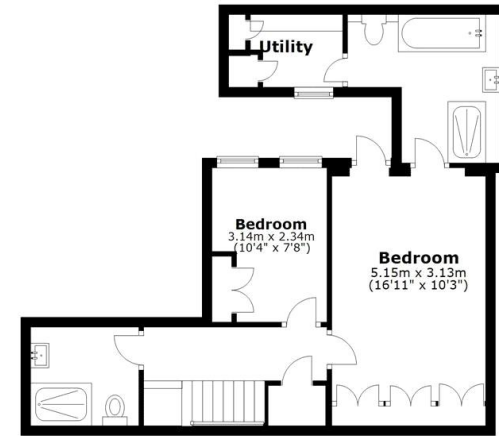
Deposit: £7,600

All Bills Inclusive , Short Let

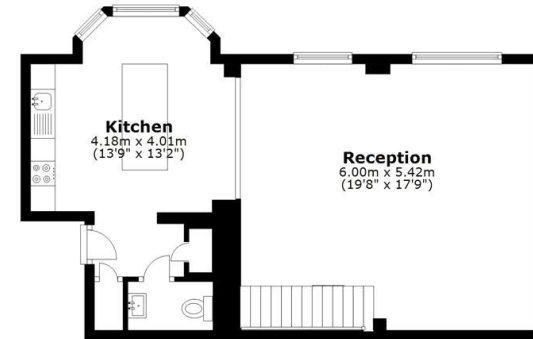
**Asking price:** £1,750 pw



Lower Ground Floor



Ground Floor



Total area: approx. 102.4 sq. metres (1101.8 sq. feet)

020 7096 9476

contact@landstones.co.uk

Whilst every effort is made to ensure the accuracy of these details, it should be noted that the measurements are approximate only. Floorplans are for representation purposes only and prepared according to the RICS Code of Measuring Practice by our floorplan provider. Therefore, the layout of doors, windows and rooms are approximate and should be regarded as such by any prospective tenant.