



Old Brompton Road, SW5

## Old Brompton Road, SW5

A stunning three bedroom lateral apartment in this prestigious portered mansion block with lift and communal gardens, the ideal family flat!

The apartment is within Bousfield catchment area and with easy access to Earls Court Road tube station as well as Gloucester Road. Both South Kensington and Chelsea are also within a short walk.

Council Tax Band: G  
Deposit: £8,640

Communal Garden, Porter

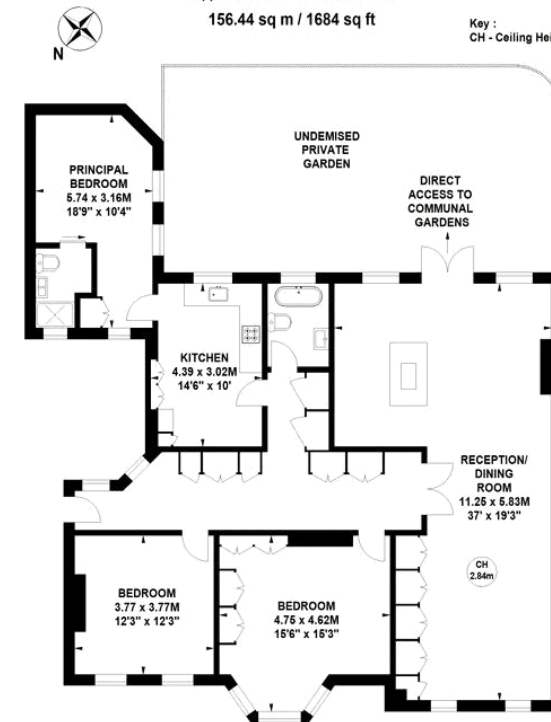
**Asking price: £1,440**



### Coleherne Court, Old Brompton Road, SW5

Approximate Gross Internal Area  
156.44 sq m / 1684 sq ft

Key :  
CH - Ceiling Height



Ground Floor

Not to scale, for guidance only and must not be relied upon as a statement of fact.  
All measurements and areas are approximate only

020 7096 9476

contact@landstones.co.uk

Whilst every effort is made to ensure the accuracy of these details, it should be noted that the measurements are approximate only. Floorplans are for representation purposes only and prepared according to the RICS Code of Measuring Practice by our floorplan provider. Therefore, the layout of doors, windows and rooms are approximate and should be regarded as such by any prospective tenant.