



Philbeach Gardens, SW5

Philbeach Gardens, SW5

A spacious five-bedroom apartment located in the sought-after Philbeach Gardens, Earl's Court.

This well-maintained property boasts an impressive 360-degree roof terrace, offering stunning panoramic views of the surrounding area. The apartment is in good condition throughout, featuring a generous living space, modern kitchen, and ample natural light.

Philbeach Gardens is located 0.2 miles from Earl's Court Station (District & Piccadilly Line) and 0.5 miles from West Brompton Station (Overground and District Line). Holland Park and Hyde Park are also nearby being 0.8 miles and 1.3 miles respectively.

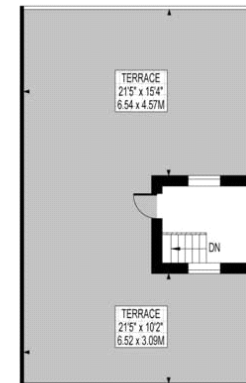
Tenure: Share of Freehold (998 years)
Service Charge: £1,504.8 per year

Share of Freehold, Roof Terrace, Five Bedrooms, Private Communal Garden, Period Building

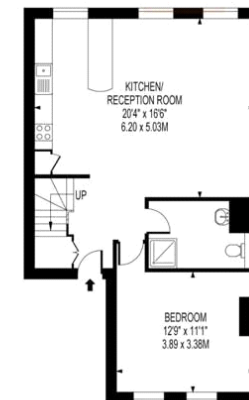
Asking price: £1,900,000



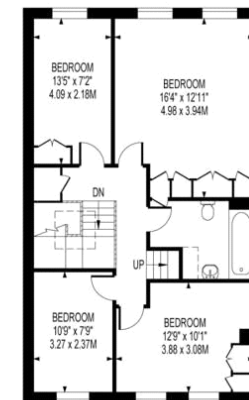
PHILBEACH GARDENS
APPROXIMATE GROSS INTERNAL FLOOR AREA : 1375 SQ FT - 127.70 SQ M
EXCLUDE THE TERRACE
TERRACE : 651 SQ FT - 60.48 SQ M



FOURTH FLOOR



SECOND FLOOR



THIRD FLOOR

020 7096 9476

contact@landstones.co.uk

Whilst every effort is made to ensure the accuracy of these details, it should be noted that the measurements are approximate only. Floorplans are for representation purposes only and prepared according to the RICS Code of Measuring Practice by our floorplan provider. Therefore, the layout of doors, windows and rooms are approximate and should be regarded as such by any prospective purchaser. Any internal photographs are intended as a guide only and it should not be assumed that any of the furniture/fittings are included in any sale. Where shown, details of lease, ground rent and service charge are provided by the vendor and their accuracy cannot be guaranteed, as the information may not have been verified and further checks should be made either through your solicitor/conveyance. Where appliances, including central heating, are mentioned, it cannot be assumed that they are in working order, as they have not been tested. Please also note that wiring, plumbing and drains have not been checked.