



Elvaston Place, SW7



## Elvaston Place, SW7

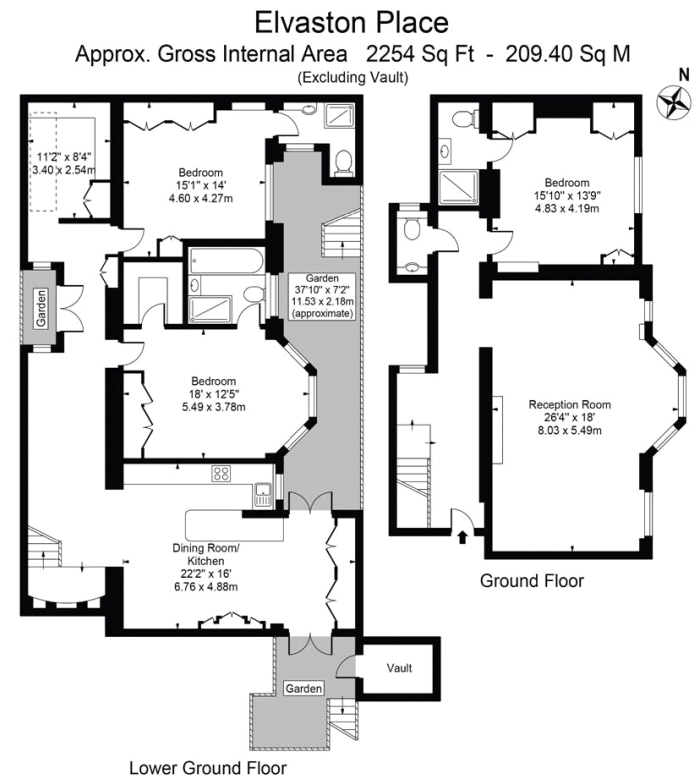
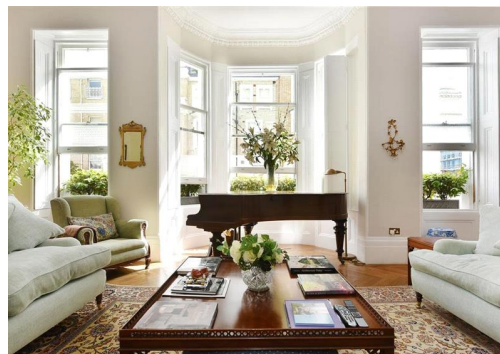
A truly exceptional duplex four bedroom apartment with finishes rarely seen in the London rental market available to rent on Elvaston Place.

Elvaston Place is well situated for access to an excellent range of facilities including shops and restaurants on High Street Kensington, world renowned museums in South Kensington, as well as being conveniently placed for the underground connections (Piccadilly, Circle and District lines) at Gloucester Road and South Kensington. This apartment is also just south of the open spaces of Kensington Palace Gardens and Hyde Park as well as offering easy access in and out of London via the A4/ Cromwell Road.

Council Tax Band: G  
Deposit: £13,800  
Garden details: Private Garden

Air Conditioning, Water Softener, High Ceilings & Wood Floors, Underfloor Heating Throughout

**Asking price:** £2,300 pw



For Illustration Purposes Only - Not To Scale

This floor plan should be used as a general outline for guidance only and does not constitute in whole or in part an offer or contract. Any intending purchaser or lessee should satisfy themselves by inspection, searches, enquiries and full survey as to the correctness of each statement. Any areas, measurements or distances quoted are approximate and should not be used to value a property or be the basis of any sale or let.

020 7096 9476

contact@landstones.co.uk

Whilst every effort is made to ensure the accuracy of these details, it should be noted that the measurements are approximate only. Floorplans are for representation purposes only and prepared according to the RICS Code of Measuring Practice by our floorplan provider. Therefore, the layout of doors, windows and rooms are approximate and should be regarded as such by any prospective tenant.