



Barlby Road, W10

Barlby Road, W10

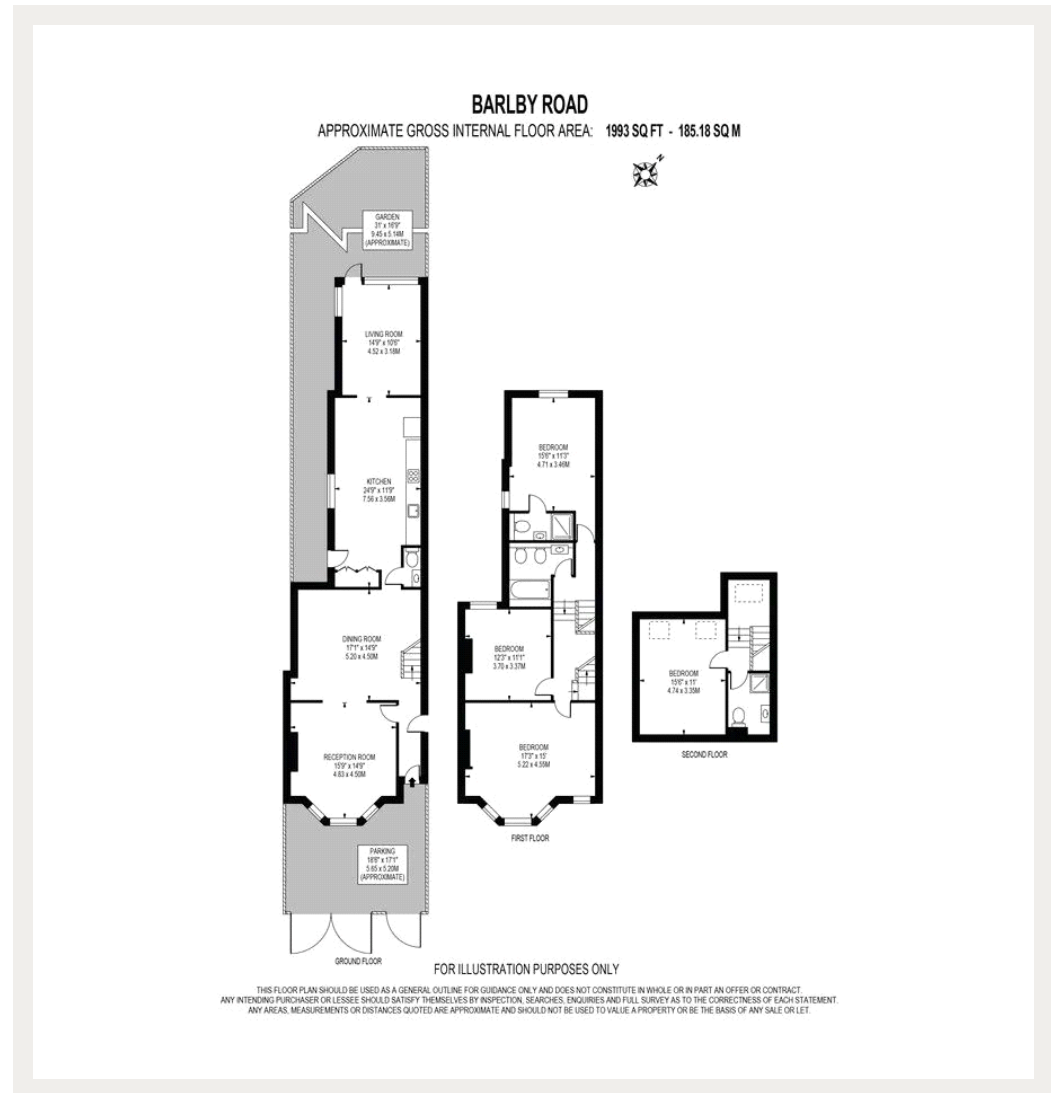
Offered on a Short-Let basis, this interior designed four bedroom family home located on this highly desirable road in North Kensington with off street parking and a large rear garden.

Barlby Road combines a serene, community-oriented atmosphere with proximity to West London's finest destinations, including White City House, Westfield, Westbourne Grove, Portobello Road, and Golborne Road.

Council Tax Band: N/A
Deposit: £10,000

All Bills Inclusive , Short Let

Asking price: £2,300 pw



020 7096 9476

contact@landstones.co.uk

Whilst every effort is made to ensure the accuracy of these details, it should be noted that the measurements are approximate only. Floorplans are for representation purposes only and prepared according to the RICS Code of Measuring Practice by our floorplan provider. Therefore, the layout of doors, windows and rooms are approximate and should be regarded as such by any prospective tenant.