



Penywern Road, SW5

Penywern Road, SW5

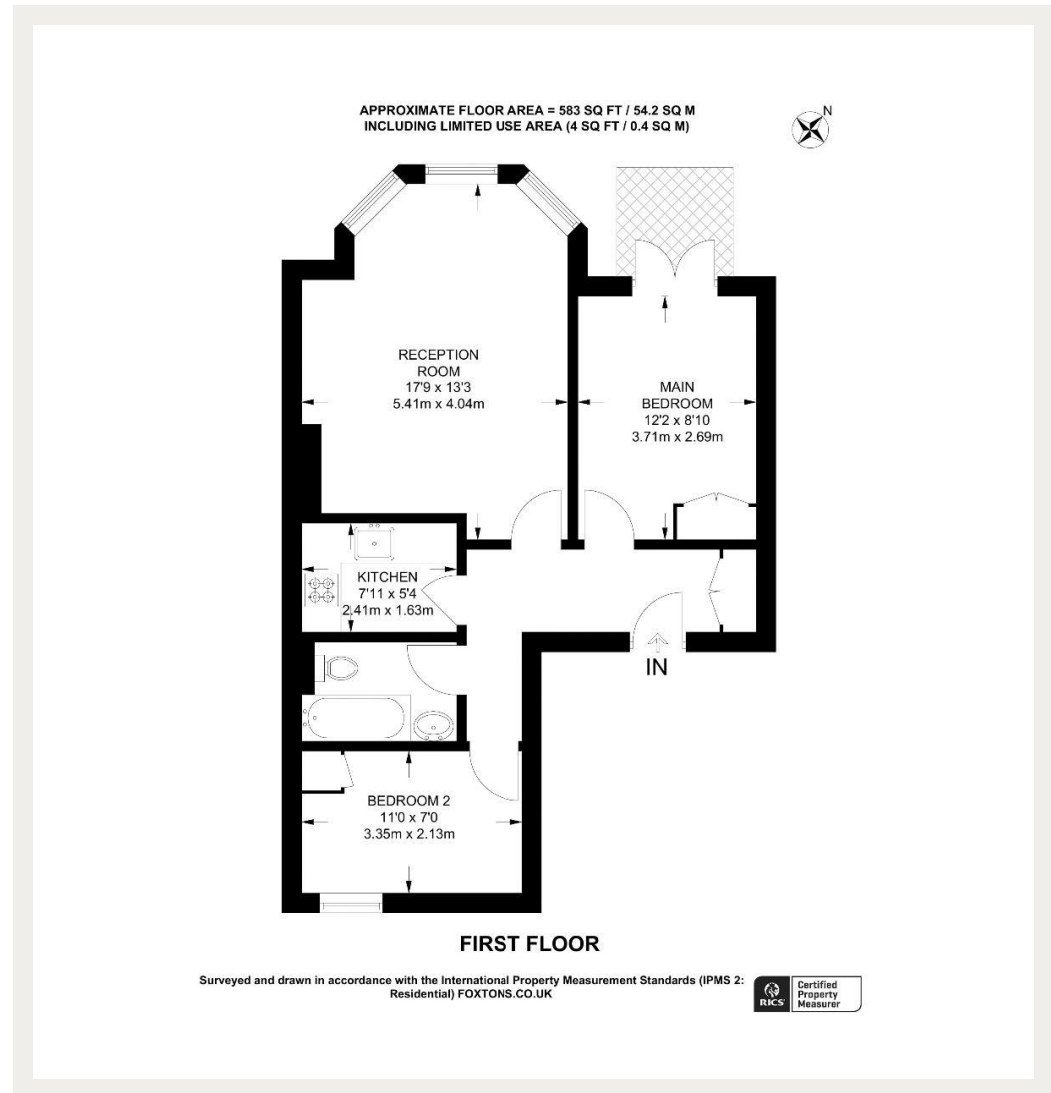
A spacious two double bedroom apartment set on the first floor of this Victorian conversion block in the heart of Earl's Court.

This property is located just a few minutes walk from Earls Court tube station (District and Piccadilly Lines) and also moments away from the many shops, bars and restaurants of Earl's Court and Chelsea.

Council Tax Band: E
Deposit: £3,000

Two Double Bedrooms, Newly Redecorated , Private Terrace, High Ceilings

Asking price: £600 pw



020 7096 9476

contact@landstones.co.uk

Whilst every effort is made to ensure the accuracy of these details, it should be noted that the measurements are approximate only. Floorplans are for representation purposes only and prepared according to the RICS Code of Measuring Practice by our floorplan provider. Therefore, the layout of doors, windows and rooms are approximate and should be regarded as such by any prospective tenant.