



Kings Road, SW3

Kings Road, SW3

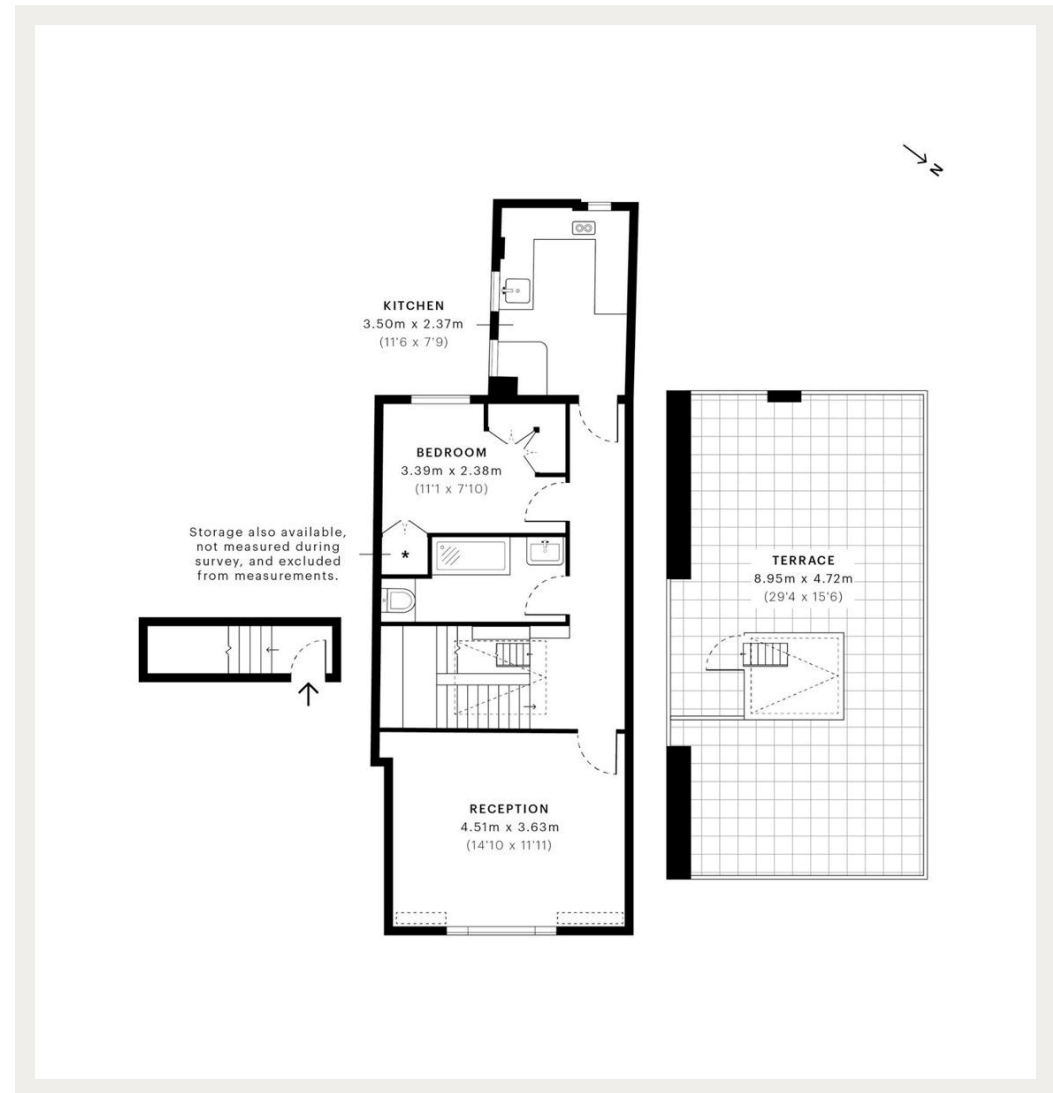
A newly redecorated one bedroom apartment set on the top floor with a roof terrace in this well maintained period building.

Kings Road is ideally situated in the heart of Chelsea moments away from all the cafes and restaurants that Chelsea has to offer.

Council Tax Band: E
Deposit: £2,800

Private Rooftop

Asking price: £560 pw



020 7096 9476

contact@landstones.co.uk

Whilst every effort is made to ensure the accuracy of these details, it should be noted that the measurements are approximate only. Floorplans are for representation purposes only and prepared according to the RICS Code of Measuring Practice by our floorplan provider. Therefore, the layout of doors, windows and rooms are approximate and should be regarded as such by any prospective tenant.