



Eccleston Square, SW1V

Eccleston Square, SW1V

This stunning five bedroom property with palatial proportions, once home to Sir Winston Churchill available to let in this beautiful Victorian house built in 1835 by Thomas Cubitt.

Upon entering the property, you will be greeted by a wide entrance hall that leads to both the drawing room and the formal dining room. It features five bedrooms, three reception rooms, three bathrooms, a kitchen, and media room. Natural lighting and outdoor space are highlights, including a private patio and terraces as well as access to communal gardens and a tennis court. Offered furnished or unfurnished, the property boasts original features, fireplaces, and modern appliances in the kitchen. Sleeping accommodations include a master bedroom with en-suite and walk-in wardrobe, two double bedrooms with en-suite and walk-in wardrobes, a third double bedroom with private terrace access, and two additional bedrooms. Other amenities include a family room, additional kitchen, utility room, and guest WC.

Eccleston Square is arguably one of the most exclusive private squares in London offering residents beautifully maintained gardens and access to tennis courts. Located just below Belgravia and within the Pimlico Grid, Sloane Square, Pimlico Road and Knightsbridge are within walking distance as well as the plethora of amenities of nearby Victoria Street. Transport facilities are superb; Victoria station offers Victoria line, Circle line and District line Underground services as well as National Rail and the Gatwick Express.

Council Tax Band: H
Deposit: £27,000

Access To Communal Gardens, Five Double Bedrooms,
Private Terrace, Tennis Court

Asking price: £4,500 pw

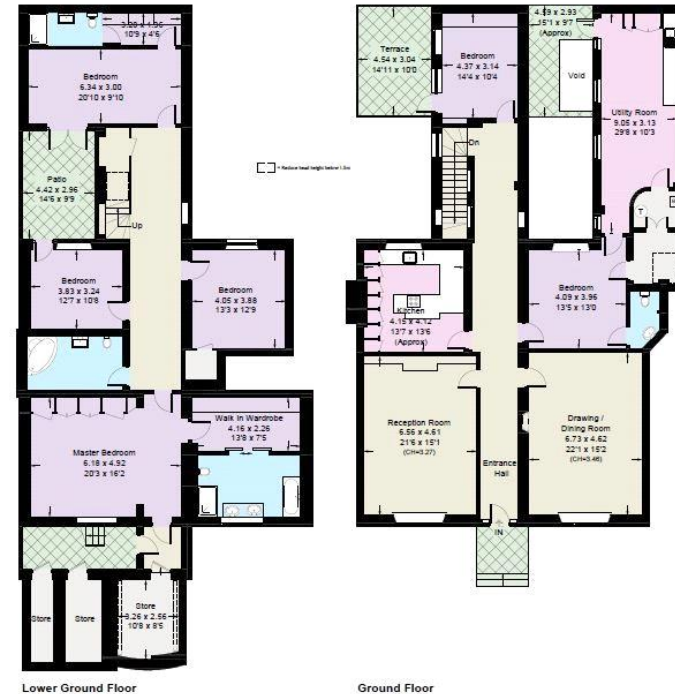
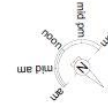
020 7096 9476

contact@landstones.co.uk



Eccleston Square, SW1V

Approximate Area = 3800 sq ft / 353 sq m
(Excluding Reduced Headroom)
Stores = 211 sq ft / 19.6 sq m
Reduced Headroom = 41 sq ft / 3.8 sq m
Total = 4052 sq ft / 376.4 sq m
Including Limited Use Area (88 sq ft / 8.2 sq m)



This plan is for layout guidance only. Not drawn to scale unless stated. Windows and door openings are approximate. Whilst every care is taken in the preparation of this plan, please check all dimensions, shapes and compass bearings before making any decisions reliant upon them. (ID680347)

Whilst every effort is made to ensure the accuracy of these details, it should be noted that the measurements are approximate only. Floorplans are for representation purposes only and prepared according to the RICS Code of Measuring Practice by our floorplan provider. Therefore, the layout of doors, windows and rooms are approximate and should be regarded as such by any prospective tenant.