



Alba Place, W11

Alba Place, W11

Nestled within a gated and quiet cobbled mews in the heart of Notting Hill, this two-bedroom mews house has recently been meticulously interior designed for contemporary living.

The property is ideally located for the fantastic array of shops, restaurants and bars on Portobello Road. Ladbroke Grove Underground Station is within walking distance on the Circle and Hammersmith & City lines.

Council Tax Band: E
Deposit: £7,200
Garden details: Private Garden

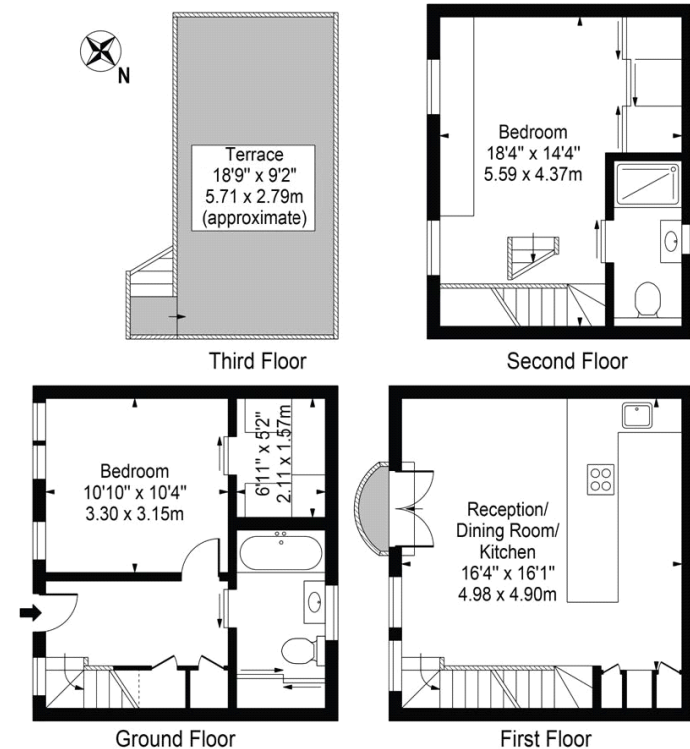
Gated Mews, Private Rooftop

Asking price: £1,200 pw



Alba Place

Approx. Gross Internal Area 883 Sq Ft - 82.03 Sq M



This floor plan should be used as a general outline for guidance only and does not constitute in whole or in part an offer or contract. Any intending purchaser or lessee should satisfy themselves by inspection, searches, enquiries and full survey as to the correctness of each statement. Any areas, measurements or distances quoted are approximate and should not be used to value a property or be the basis of any sale or let.

020 7096 9476

contact@landstones.co.uk

Whilst every effort is made to ensure the accuracy of these details, it should be noted that the measurements are approximate only. Floorplans are for representation purposes only and prepared according to the RICS Code of Measuring Practice by our floorplan provider. Therefore, the layout of doors, windows and rooms are approximate and should be regarded as such by any prospective tenant.