



Lockton Street, W10

## Lockton Street, W10

Set on the top floor of a superb purpose-built development, this apartment benefits from a rooftop terrace with breath-taking panoramic views of the London skyline, along with wood floors and floor-to-ceiling windows that flood the space with natural light.

The development also offers a communal garden, while the green open spaces of Avondale Park and Kensington Memorial Gardens are within easy reach.

The property enjoys excellent transport links, with the Hammersmith and City tube line just moments away. The surrounding area is rich in pubs, bars, and local supermarkets, and a short stroll down St Anne's Road leads to the beloved Embassy Café, perfect for a weekend brunch. Westfield Shopping City, with its Central line tube station and bus depot, is also conveniently nearby.

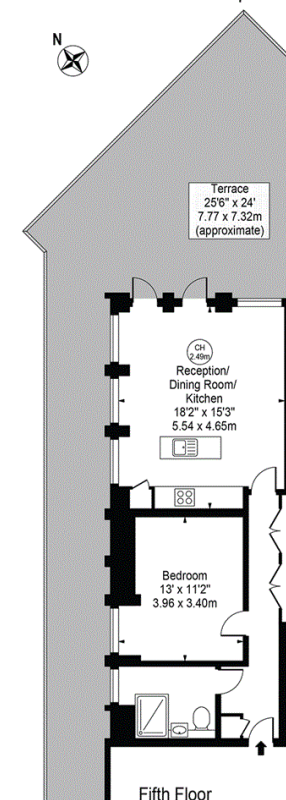
Council Tax Band: C (Kensington and Chelsea)  
Deposit: £3,125

Private Terrace, Lift, Proximity to Tube, Wooden Floors, Communal Garden Access

**Asking price:** £577 pw



### Packenhams House Approx. Gross Internal Area 586 Sq Ft - 54.44 Sq M



Fifth Floor  
For Illustration Purposes Only - Not To Scale

This floor plan should be used as a general outline for guidance only and does not constitute in whole or in part an offer or contract. Any intending purchaser or lessee should satisfy themselves by inspection, searches, enquiries and full survey as to the correctness of each statement. Any areas, measurements or distances quoted are approximate and should not be used to value a property or be the basis of any sale or let.

020 7096 9476

contact@landstones.co.uk

Whilst every effort is made to ensure the accuracy of these details, it should be noted that the measurements are approximate only. Floorplans are for representation purposes only and prepared according to the RICS Code of Measuring Practice by our floorplan provider. Therefore, the layout of doors, windows and rooms are approximate and should be regarded as such by any prospective tenant.