



Chapel Side, W2

Chapel Side, W2

This stunning two bedroom mews house is tucked away on a quiet cobbled street just moments away from Kensington Gardens and Hyde Park. Perfectly situated for great transport links you are a short walk to Bayswater and Queensway tube stations and also to Notting Hill Gate tube.

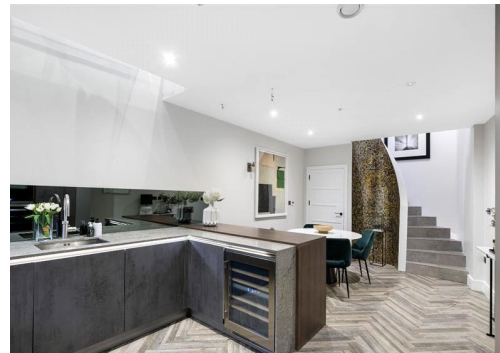
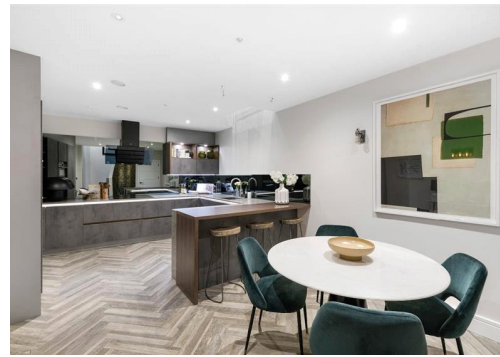
Set over three floors the property is a perfect London home or pied a terre. Offered in stunning condition the accommodation consists of a ground floor reception room, flowing down a sweeping staircase into the basement you find an open plan kitchen with ample room for cooking and entertaining and also room for a dining table. The lower ground floor also features a guest WC.

Over the first floor of the house the large double bedroom benefits from floor to ceiling wardrobes providing excellent storage and hanging space. On the same floor the modern bathroom gives the property a contemporary feel. A skylight in the roof floods light into the house and down the stairs.

Council Tax Band: G
Deposit: £4,475

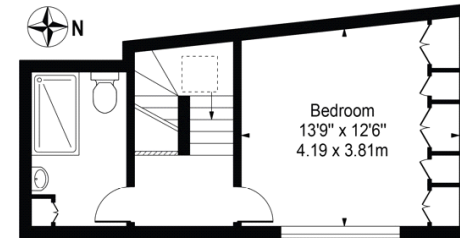
Mews House, One Bedroom, Storage, Wooden Floors, Pet Friendly

Asking price: £895 pw

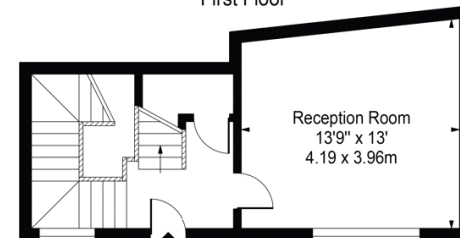


Chapel Side, W2 4LG

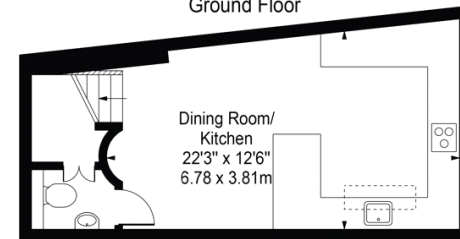
Approx. Gross Internal Area 925 Sq Ft - 85.94 Sq M



First Floor



Ground Floor



Lower Ground Floor

For Illustration Purposes Only - Not To Scale

This floor plan should be used as a general outline for guidance only and does not constitute in whole or in part an offer or contract. Any intending purchaser or lessee should satisfy themselves by inspection, searches, enquiries and full survey as to the correctness of each statement. Any areas, measurements or distances quoted are approximate and should not be used to value a property or be the basis of any sale or let.

020 7096 9476

contact@landstones.co.uk

Whilst every effort is made to ensure the accuracy of these details, it should be noted that the measurements are approximate only. Floorplans are for representation purposes only and prepared according to the RICS Code of Measuring Practice by our floorplan provider. Therefore, the layout of doors, windows and rooms are approximate and should be regarded as such by any prospective tenant.