



Knightsbridge, SW1X

# Knightsbridge, SW1X

Offered on a Short-Let basis, this one of a kind lateral apartment has been meticulously designed to the highest standard throughout. Located in the very heart of Knightsbridge, arguably one of London's most exclusive addresses.

Occupying the entire fifth floor of this magnificent red brick mansion building, this eight bedroom apartment boasts over 4,500 sq ft of superb accommodation. The apartment has been finished to an excellent standard and presented in beautiful condition, there is a wealth of natural light throughout and ample entertaining space.

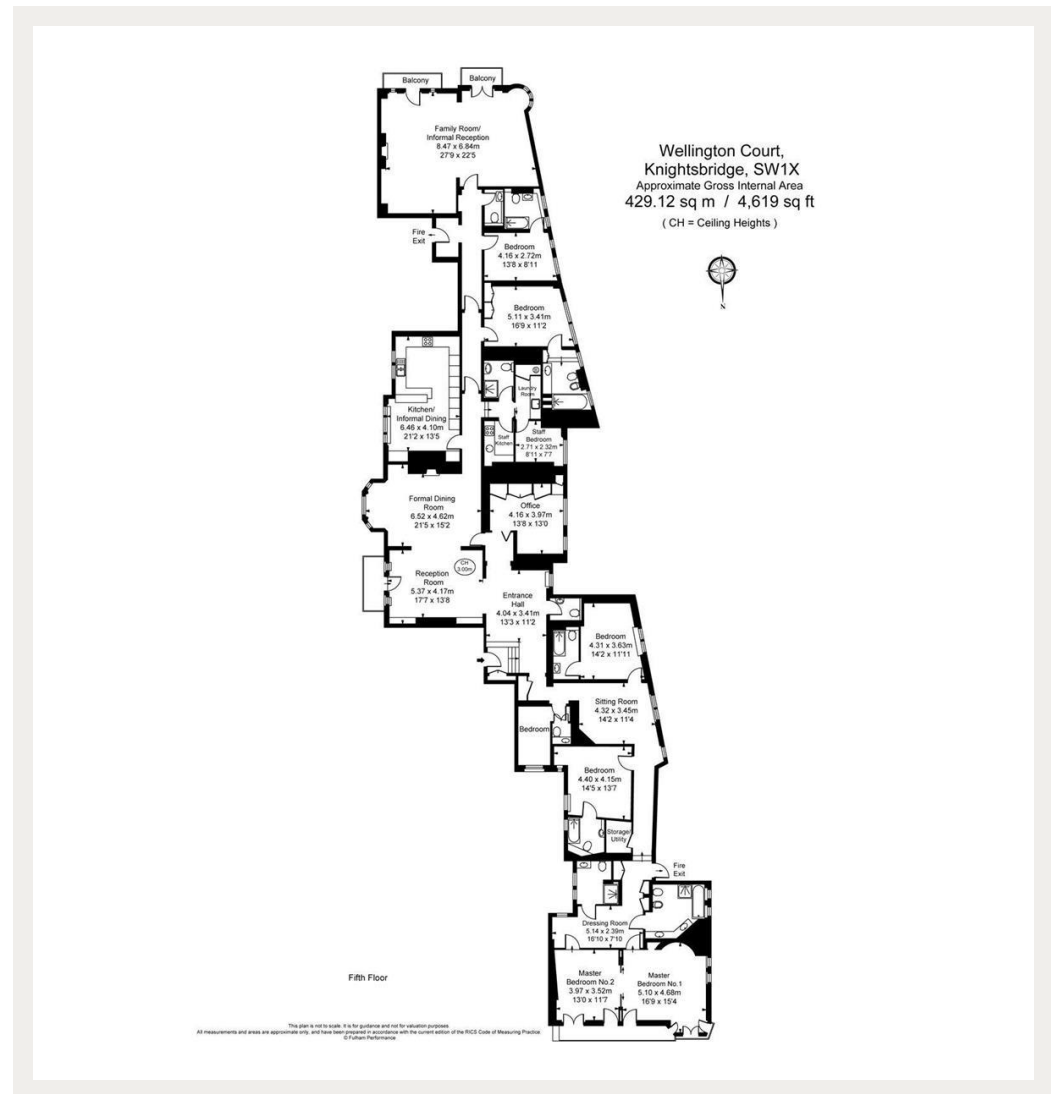
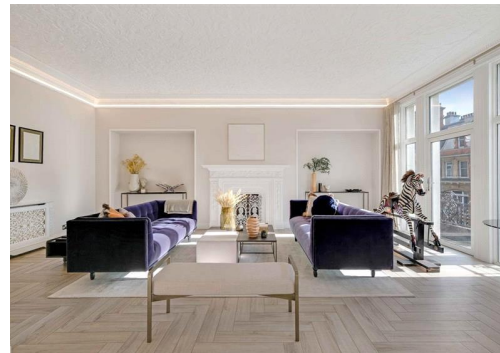
The accommodation comprises a magnificent double reception room, eat in kitchen, spacious principle bedroom suite with direct views over Hyde Park, seven further double bedrooms (all with en-suite bathrooms), an additional study and a staff area with its own kitchen.

In the heart of Knightsbridge, Wellington Court is superbly located to a wonderful selection of restaurants and boutique shops, as well as the world class amenities of neighbouring Mayfair and Chelsea, with the greenery of Hyde Park on its door step.

Council Tax Band: H  
Deposit: £86,500

24/7 Concierge, Air Conditioning, Lift Access, Allocated Parking, All Bills Inclusive, Short Let

**Asking price: £20,000 pw**



Whilst every effort is made to ensure the accuracy of these details, it should be noted that the measurements are approximate only. Floorplans are for representation purposes only and prepared according to the RICS Code of Measuring Practice by our floorplan provider. Therefore, the layout of doors, windows and rooms are approximate and should be regarded as such by any prospective tenant.

020 7096 9476

contact@landstones.co.uk