



Wycombe Square, W8

# Wycombe Square, W8

Offered on a Short-Let basis, a modern and well presented lateral apartment within this sought after and exclusive development located between Kensington High Street and Notting Hill Gate.

Wycombe Square is nestled in the heart of Kensington, located just off Campden Hill Road, transporting you outside exclusive boutiques and award winning restaurants and bars of Notting Hill Gate and High Street Kensington. The open spaces of the iconic Holland Park and Kensington Gardens are just a short distance away.

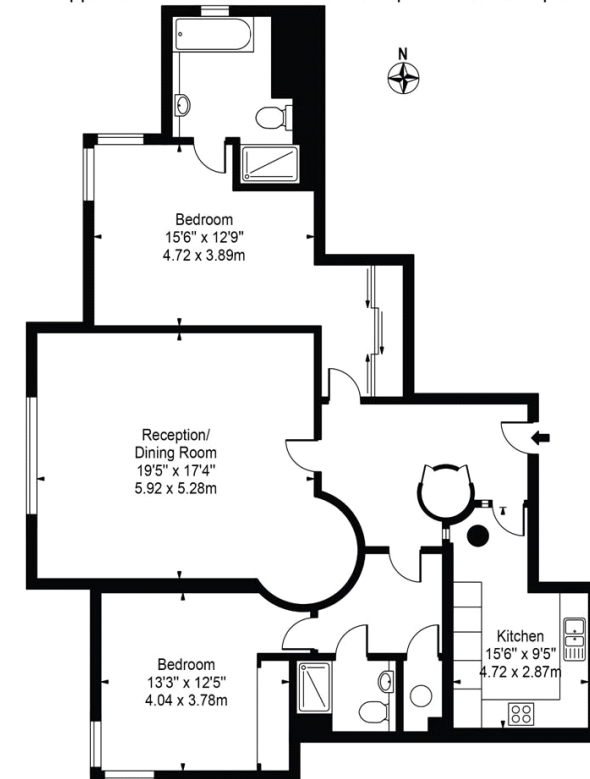
Council Tax Band: H  
Deposit: £8,250  
Parking options: Off Street

24/7 Concierge and Security, Air-Conditioning, Communal Garden, Underfloor Heating, All Bills Inclusive, Short Let

**Asking price:** £1,900 pw



## Wycombe Square Approx. Gross Internal Area 1244 Sq Ft - 115.57 Sq M



First Floor  
For Illustration Purposes Only - Not To Scale

This floor plan should be used as a general outline for guidance only and does not constitute in whole or in part an offer or contract. Any intending purchaser or lessee should satisfy themselves by inspection, searches, enquiries and full survey as to the correctness of each statement. Any areas, measurements or distances quoted are approximate and should not be used to value a property or be the basis of any sale or let.

020 7096 9476

contact@landstones.co.uk

Whilst every effort is made to ensure the accuracy of these details, it should be noted that the measurements are approximate only. Floorplans are for representation purposes only and prepared according to the RICS Code of Measuring Practice by our floorplan provider. Therefore, the layout of doors, windows and rooms are approximate and should be regarded as such by any prospective tenant.