



**Bramham Gardens, London**

## Bramham Gardens, London

Offered on a short-let basis, this exceptional first-floor apartment boasts a private terrace with stunning south-facing views over the communal gardens.

The bright and spacious reception room is bathed in natural light, enhanced by French windows that open onto the terrace, offering picturesque views of the residents' garden square. High ceilings further elevate the space and allow for a versatile mezzanine, ideal as a snug or office. The two generously sized bedrooms feature built-in storage, with the principal bedroom enjoying a south-facing balcony and an en suite bathroom. An additional bathroom completes the accommodation.

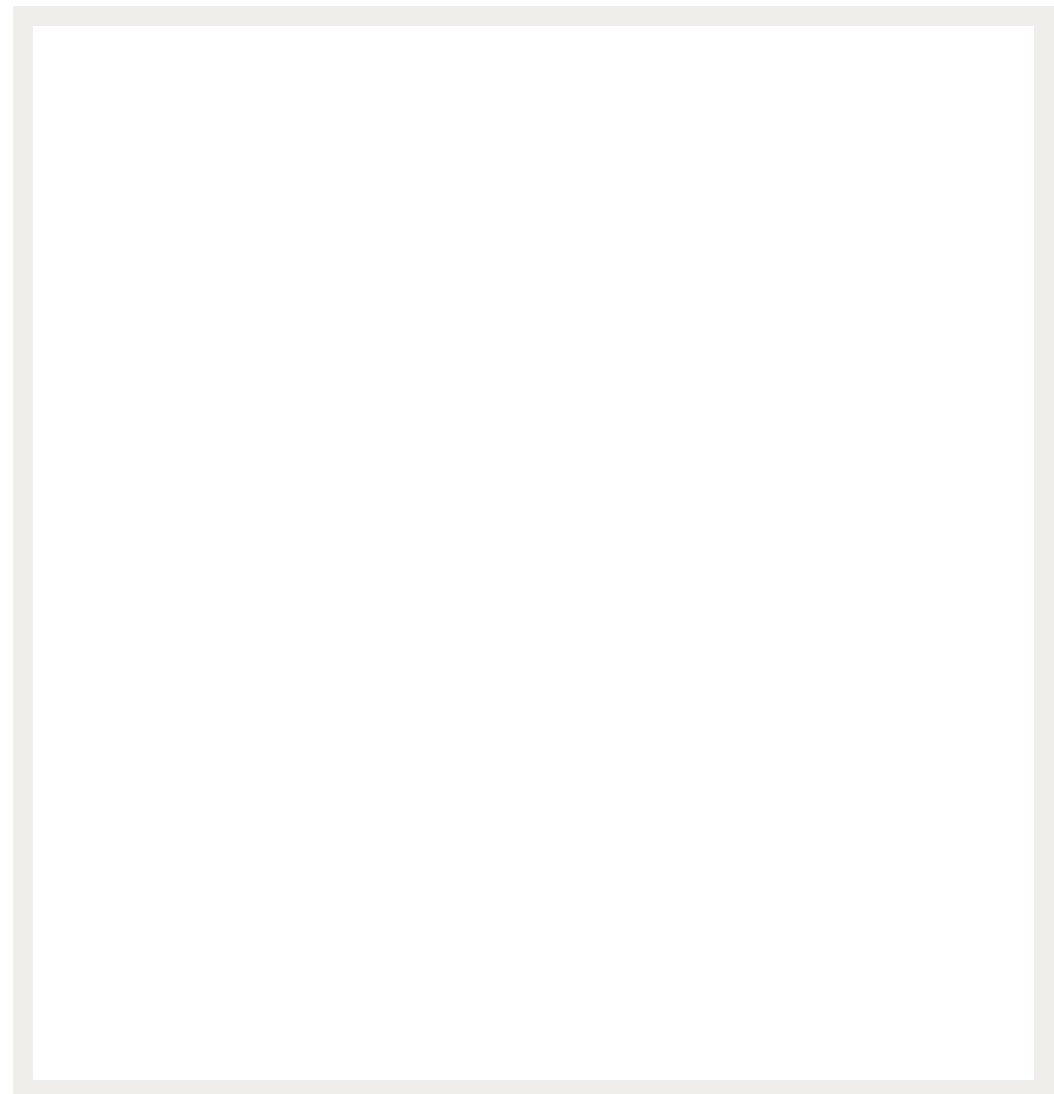
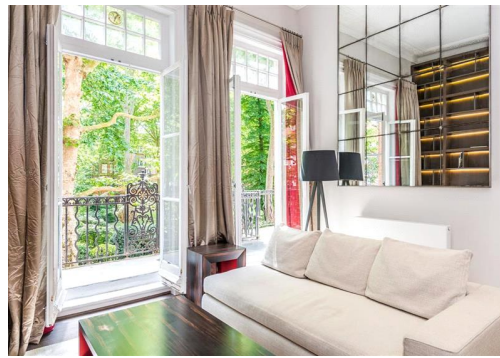
Bramham Gardens is a prestigious garden square located just east of Earl's Court Road. The property benefits from superb transport links, being approximately 0.2 miles from Earl's Court Underground station and 0.5 miles from West Brompton Underground station.

Deposit: £8,168

Garden details: Communal Garden, Private Garden

Short Let, All Bills Inclusive , Private Terrace, Access To Communal Gardens, Mezzanine

**Asking price:** £2,042 pw



Whilst every effort is made to ensure the accuracy of these details, it should be noted that the measurements are approximate only. Floorplans are for representation purposes only and prepared according to the RICS Code of Measuring Practice by our floorplan provider. Therefore, the layout of doors, windows and rooms are approximate and should be regarded as such by any prospective tenant.

020 7096 9476

contact@landstones.co.uk