



Cambridge Gardens, W10

Cambridge Gardens, W10

This lovely two-bedroom flat is situated within a well-maintained, stucco-fronted building, just a short stroll from the vibrant heart of Portobello Road.

The property features an open-plan living area with a contemporary finish, complemented by wooden flooring throughout. It also benefits from direct access to a beautifully kept rear lawned garden, ideal for relaxation and entertaining.

Cambridge Gardens is an idyllic street, perfectly located a short walk from the eclectic Portobello and Golborne Road markets. The area enjoys excellent transport links, with Ladbroke Grove and Notting Hill Gate stations providing convenient access to the city

Council Tax Band: D (Kensington and Chelsea)
Deposit: £3,460

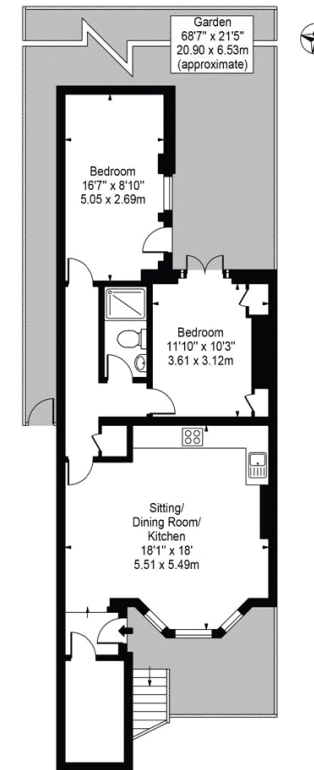
Garden, Recently Refurbished, Wooden Floors, Good Transport Links

Asking price: £692 pw



Cambridge Gardens

Approx. Gross Internal Area 741 Sq Ft - 68.84 Sq M



Lower Ground Floor
For Illustration Purposes Only - Not To Scale

This floor plan should be used as a general outline for guidance only and does not constitute in whole or in part an offer or contract. Any intending purchaser or lessee should satisfy themselves by inspection, searches, enquiries and full survey as to the correctness of each statement. Any areas, measurements or distances quoted are approximate and should not be used to value a property or be the basis of any sale or let.

020 7096 9476

contact@landstones.co.uk

Whilst every effort is made to ensure the accuracy of these details, it should be noted that the measurements are approximate only. Floorplans are for representation purposes only and prepared according to the RICS Code of Measuring Practice by our floorplan provider. Therefore, the layout of doors, windows and rooms are approximate and should be regarded as such by any prospective tenant.