



Cornwall Gardens, SW7

# Cornwall Gardens, SW7

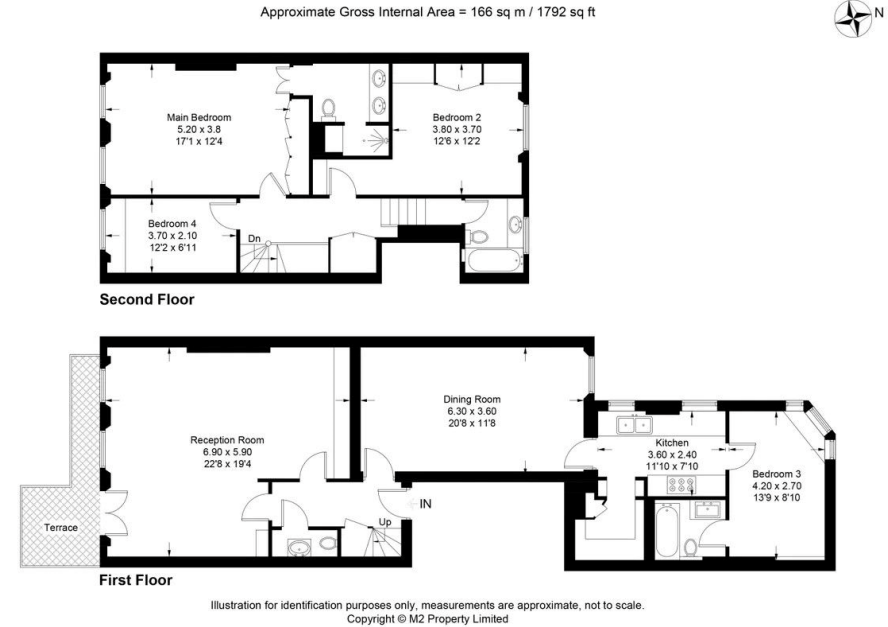
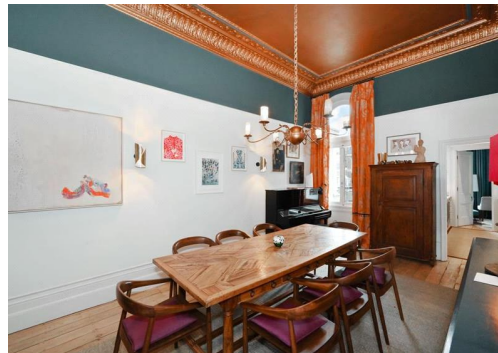
A magnificent and tasteful split level four-bedroom apartment set on the first and second floor of this striking white stucco building. The property benefits from a south facing and spacious reception room with a private terrace overlooking the communal gardens.

Cornwall Gardens is a beautiful garden square in South Kensington, lined with Grade II listed white stucco townhouses. The flat is positioned towards the end of the square offering a feeling of serenity. It is a short walk to the local amenities of Gloucester Road and the nearby walk way leads up to Kensington High Street as well as Hyde Park. The flat is ideally situated for the transport links of Gloucester Road underground station.

Council Tax Band: H  
Deposit: £15,900  
Garden details: Private Garden

Pet Friendly, Access To Communal Gardens

**Asking price:** £2,650 pw



Whilst every effort is made to ensure the accuracy of these details, it should be noted that the measurements are approximate only. Floorplans are for representation purposes only and prepared according to the RICS Code of Measuring Practice by our floorplan provider. Therefore, the layout of doors, windows and rooms are approximate and should be regarded as such by any prospective tenant.

020 7096 9476

contact@landstones.co.uk