



Rutland Court, SW7

Rutland Court, SW7

An impressive lateral four bedroom, four bathroom apartment spreading over 2,500 square feet located on a private road in the heart of Knightsbridge.

Rutland Court is an Edwardian residential building with a very prestigious entrance hall and common parts and has a really good reputation for privacy and security, nestled in a private gated garden. The home offers very generous interconnecting reception rooms benefitting from French doors leading onto an East-facing balcony. There is a 24hr security lodge and protected parking spaces available to rent.

The property is only moments away from Hyde Park and the world class selection of shops, restaurants and amenities that the area provides, in particular Knightsbridge and Sloane Street.

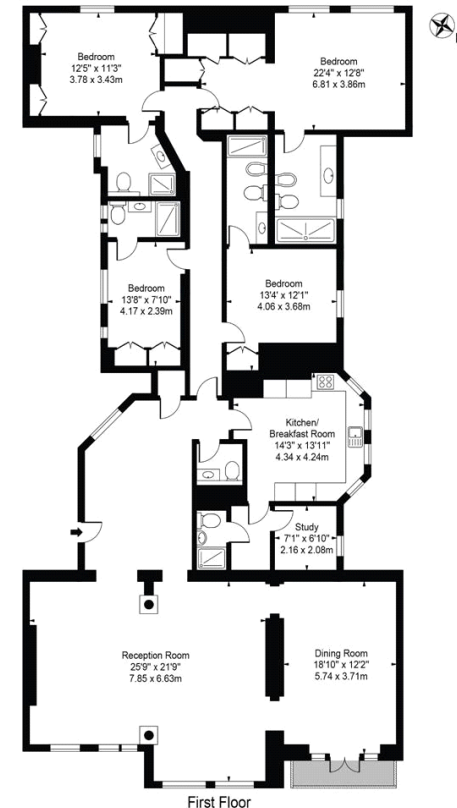
Council Tax Band: H
Deposit: £34,600

24/7 Concierge and Security, Air-Conditioning, Gym, Lift Access

Asking price: £5,769 pw



Rutland Court
Approx. Gross Internal Area 2529 Sq Ft - 234.95 Sq M



For Illustration Purposes Only - Not To Scale

This floor plan should be used as a general outline for guidance only and does not constitute in whole or in part an offer or contract. Any intending purchaser or lessee should satisfy themselves by inspection, searches, enquiries and full survey as to the correctness of each statement. Any areas, measurements or distances quoted are approximate and should not be used to value a property or be the basis of any sale or let.

020 7096 9476

contact@landstones.co.uk

Whilst every effort is made to ensure the accuracy of these details, it should be noted that the measurements are approximate only. Floorplans are for representation purposes only and prepared according to the RICS Code of Measuring Practice by our floorplan provider. Therefore, the layout of doors, windows and rooms are approximate and should be regarded as such by any prospective tenant.