



Pont Street, SW1X

Pont Street, SW1X

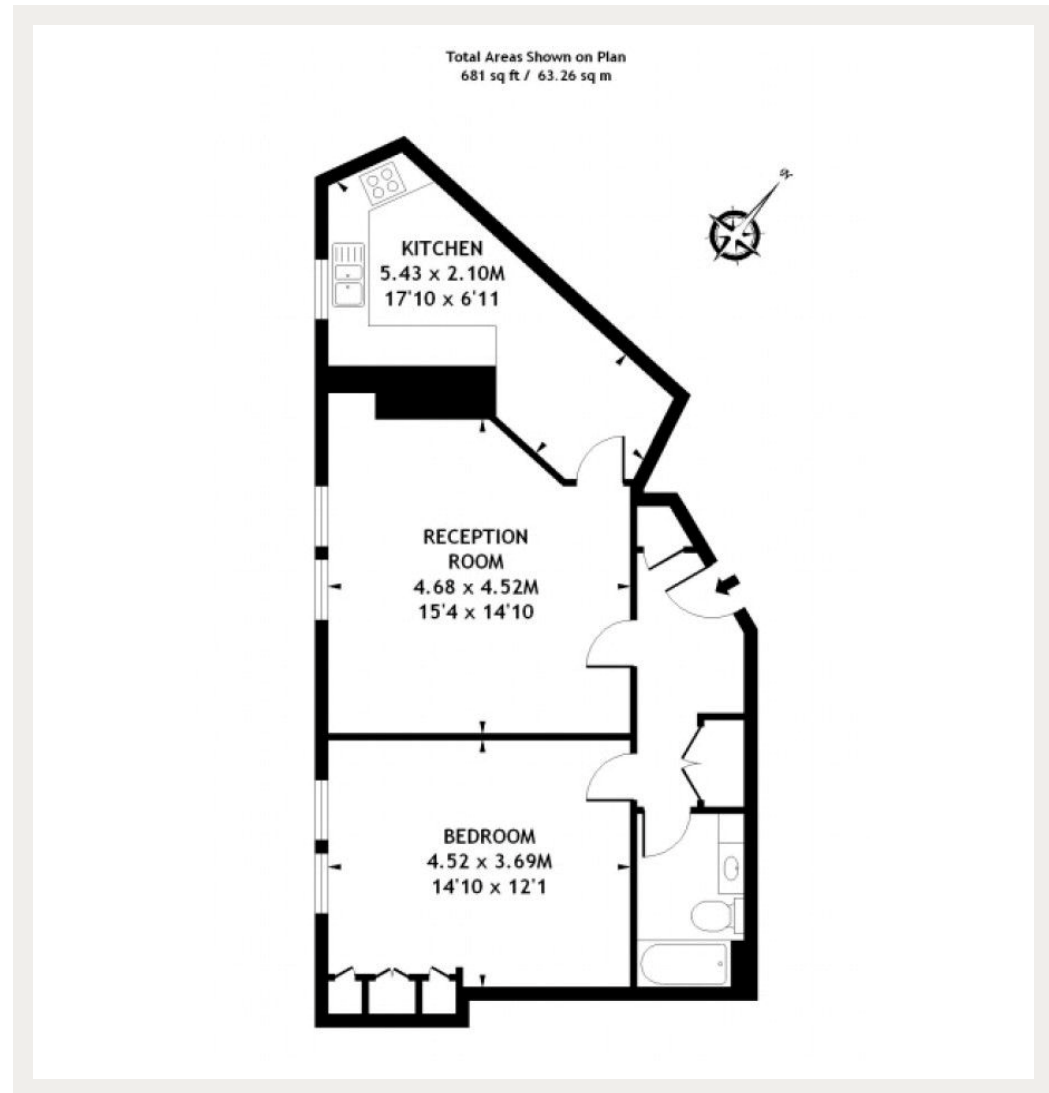
A bright and spacious one double bedroom apartment set on the third floor (with lift) of this period building located in the heart of Knightsbridge.

The apartment is located on the highly desired Pont Street, where residents can enjoy the all the amenities both Sloane Square and Knightsbridge have to offer.

Deposit: £3,675

Eat-in Kitchen, Good Storage, Lift Access, Heating & Hot Water Included

Asking price: £735 pw



Whilst every effort is made to ensure the accuracy of these details, it should be noted that the measurements are approximate only. Floorplans are for representation purposes only and prepared according to the RICS Code of Measuring Practice by our floorplan provider. Therefore, the layout of doors, windows and rooms are approximate and should be regarded as such by any prospective tenant.

020 7096 9476

contact@landstones.co.uk