



Warwick Gardens, W14

Warwick Gardens, W14

A spacious lateral apartment of rare proportions and finished to exacting standards. Accommodation extends to over 2,000 sq. ft. and comprises of; double reception room, five double bedrooms, four bathrooms and modern fitted kitchen with premium appliances.

St Mary Abbot's Court is located on the corner of Warwick Gardens and High Street Kensington, benefitting from numerous shopping, entertainment and transport facilities and the nearby open spaces of Holland Park.

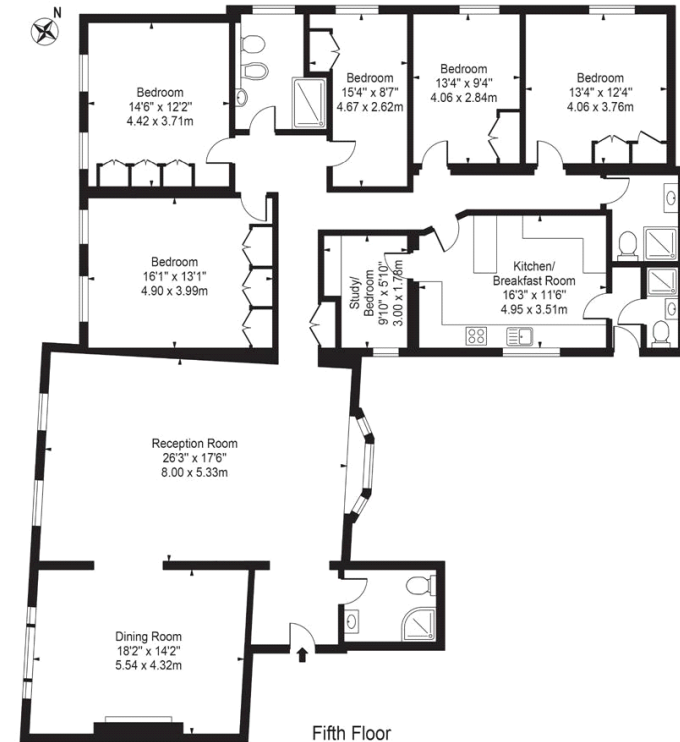
Council Tax Band: H
Deposit: £10,200

Lift Access, Pet Friendly, Porter

Asking price: £1,700 pw



St. Mary Abbots Court Approx. Gross Internal Area 2321 Sq Ft - 215.63 Sq M



For Illustration Purposes Only - Not To Scale

This floor plan should be used as a general outline for guidance only and does not constitute in whole or in part an offer or contract. Any intending purchaser or lessee should satisfy themselves by inspection, searches, enquiries and full survey as to the correctness of each statement. Any areas, measurements or distances quoted are approximate and should not be used to value a property or be the basis of any sale or let.

020 7096 9476

contact@landstones.co.uk

Whilst every effort is made to ensure the accuracy of these details, it should be noted that the measurements are approximate only. Floorplans are for representation purposes only and prepared according to the RICS Code of Measuring Practice by our floorplan provider. Therefore, the layout of doors, windows and rooms are approximate and should be regarded as such by any prospective tenant.