



Pottery Lane, W11

Pottery Lane, W11

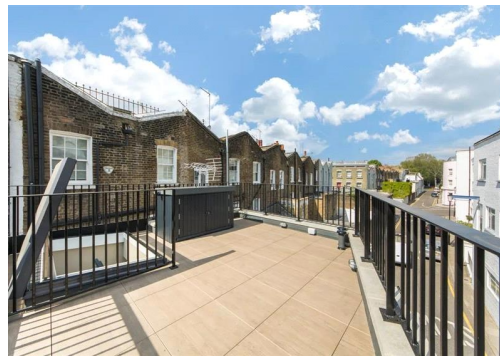
Offered on a Short-Let basis, this modern one bedroom mews house with it's own roof terrace makes it the perfect pied-a-terre.

With the expansive green space of Holland Park right on its doorstep, there's a best-of-both-worlds feel to Pottery Lane, affording a close proximity to vibrant Notting Hill. The house is located 0.3 miles to Holland Park Tube Station plus the many shops and restaurants of Holland Park Avenue.

Council Tax Band: G
Deposit: £5,850

All Bills Inclusive , Short Let

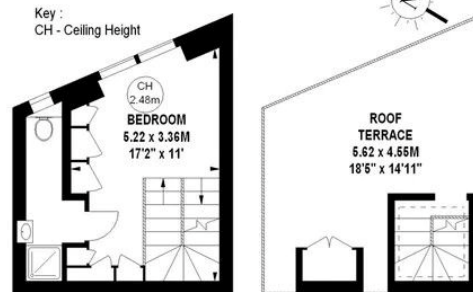
Asking price: £1,350 pw



Pottery Lane, W11

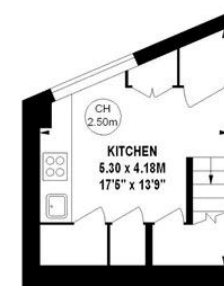
Approximate gross internal area

60.39 sq m / 650 sq ft

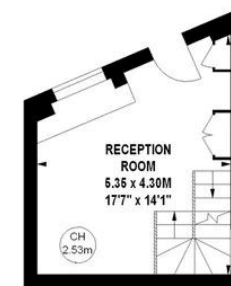


First Floor
210 sq ft

Second Floor
32 sq ft



Lower Ground Floor
198 sq ft



Ground Floor
210 sq ft

The floor plan is not to scale and measurements and areas shown are approximate and therefore should be used for illustrative purposes only. The plan has been prepared in accordance with the RICS code of Measuring Practice and whilst we have confidence in the information produced, it must not be relied on. If there is any aspect of particular importance, you should carry out or commission your own inspection of the property.
Copyright of FeaturePRO.

020 7096 9476

contact@landstones.co.uk

Whilst every effort is made to ensure the accuracy of these details, it should be noted that the measurements are approximate only. Floorplans are for representation purposes only and prepared according to the RICS Code of Measuring Practice by our floorplan provider. Therefore, the layout of doors, windows and rooms are approximate and should be regarded as such by any prospective tenant.