



Earls Court Road, W8

Earls Court Road, W8

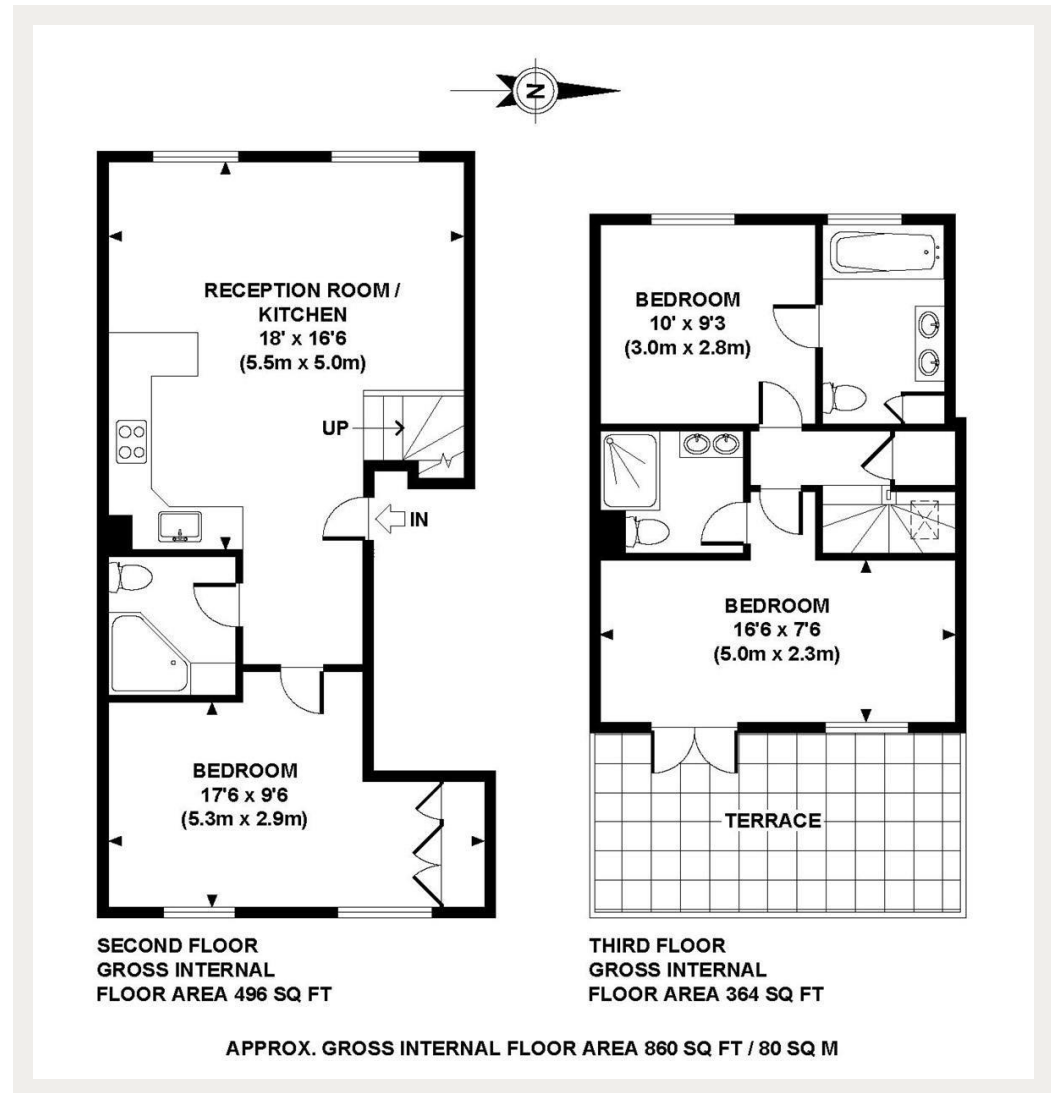
A modern three bedroom split level apartment set over the second and third floor within this attractive period building located moments away from Holland Park.

Situated in the heart of Kensington close to the many lively bars and restaurants. Kensington High Street underground station is a short walk away.

Council Tax Band: G
Deposit: £4,960

Three Double Bedrooms, Three Bathrooms, Bright Reception Room, Roof Terrace

Asking price: £992 pw



020 7096 9476

contact@landstones.co.uk

Whilst every effort is made to ensure the accuracy of these details, it should be noted that the measurements are approximate only. Floorplans are for representation purposes only and prepared according to the RICS Code of Measuring Practice by our floorplan provider. Therefore, the layout of doors, windows and rooms are approximate and should be regarded as such by any prospective tenant.