



Sutherland Place, W2

Sutherland Place, W2

Landstones are proud to offer for sale this superb split level upper maisonette in the heart of Notting Hill just moments from Westbourne Grove.

Set in one of Notting Hills colourful period town houses this apartment really does provide the West London life at its finest. Entering the property on the first floor you move up the open staircase to find two large double bedrooms on the second floor both with large sash windows that fill the rooms with light. This floor also includes the large modern family bathroom with bathtub.

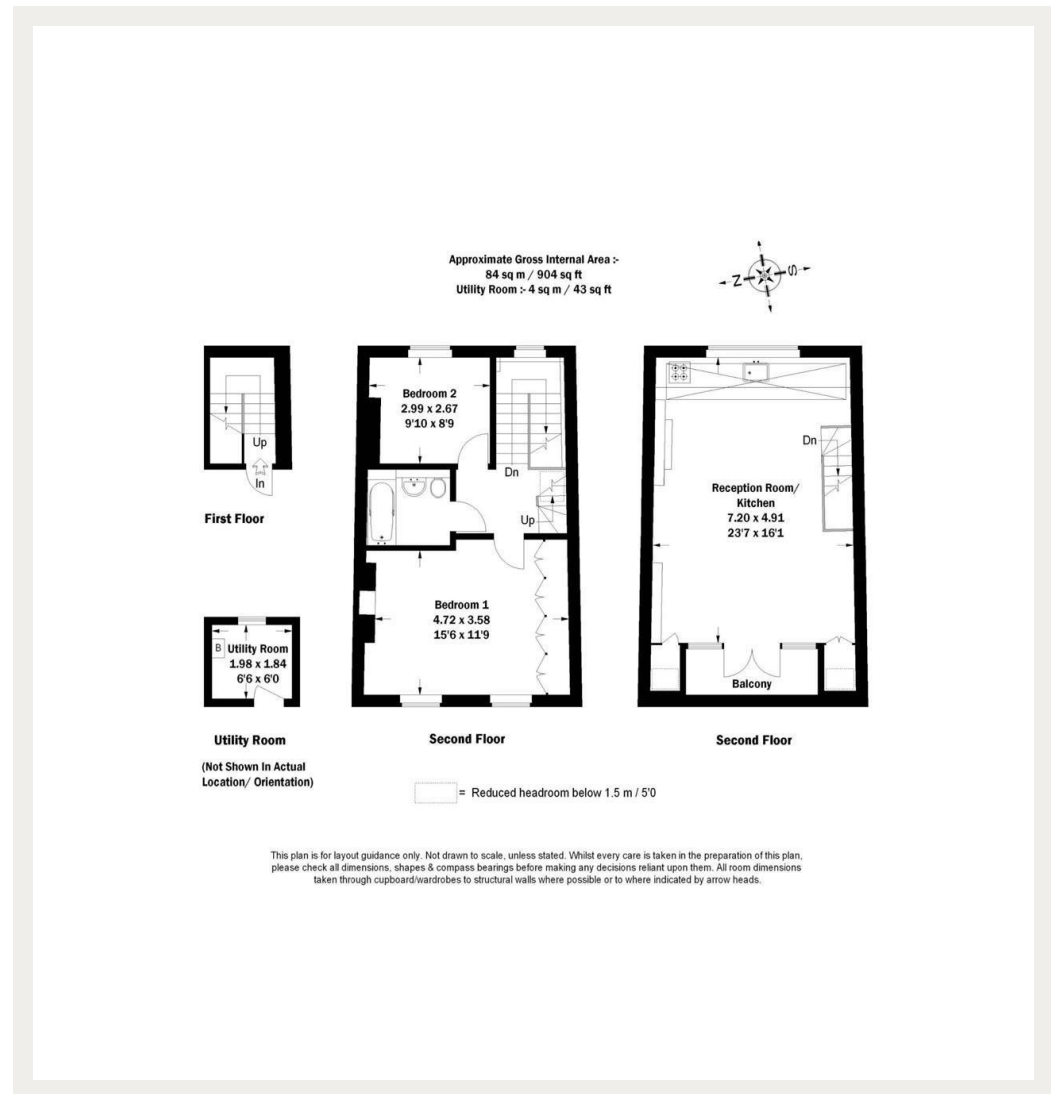
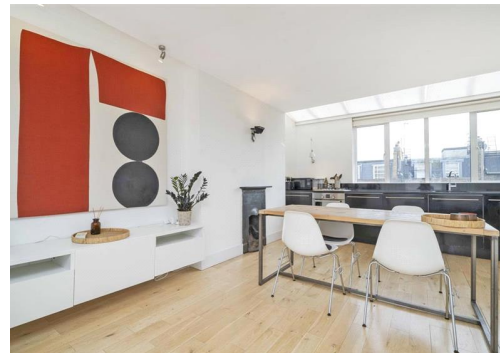
As you move up again onto the top floor you enter the large open reception space with double French doors leading out onto a parapet balcony. The room is again flooded with light from a set of ceiling windows above the open plan kitchen. The whole property has been designed to create a quiet oasis of calm but just moments from the hustle and buzz of Westbourne Grove when you want it.

Council Tax Band: F (Westminster)

Tenure: Share of Freehold

Open Plan Kitchen, Wooden Floors, Balcony, Period Building

Asking price: £1,850,000



020 7096 9476

contact@landstones.co.uk