



Portobello Road, W11

Portobello Road, W11

Offered on a Short-Let basis, this stunning first floor apartment set within a Victorian conversion on the world famous Portobello Road.

The property has been fully renovated throughout with no expense spared to create a stunning apartment, perfect for a single professional who yearns to be in the thick of the action.

Just moments from the Electric Cinema and so many other attractions of Notting Hill.

Council Tax Band: E (Kensington and Chelsea)
Deposit: £4,100

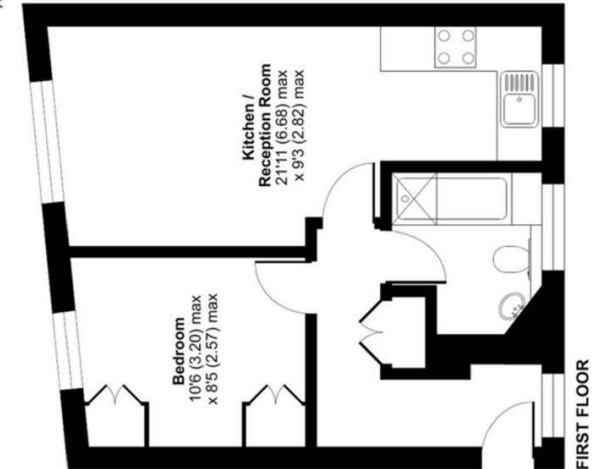
All Bills Inclusive , Short Let

Asking price: £950 pw



Portobello Road, London, W11

Approximate Area = 393 sq ft / 36.5 sq m
For identification only - Not to scale



020 7096 9476

contact@landstones.co.uk

Whilst every effort is made to ensure the accuracy of these details, it should be noted that the measurements are approximate only. Floorplans are for representation purposes only and prepared according to the RICS Code of Measuring Practice by our floorplan provider. Therefore, the layout of doors, windows and rooms are approximate and should be regarded as such by any prospective tenant.