



Queen's Gate, SW7

Queen's Gate, SW7

An exceptional four bedroom duplex apartment located on the fifth and sixth floor (with direct lift) in this impeccably maintained block in prime South Kensington. The property benefits from two roof terraces whilst boasting an abundance of natural light.

Queen's Gate is a highly sought-after street offering easy access to the many boutiques, the locals bars and restaurants available around Old Brompton Road and Gloucester Road. Hyde Park is also a short walk away.

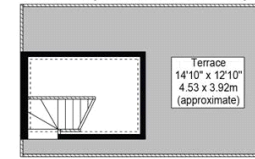
Council Tax Band: H
Deposit: £12,460

Direct Lift Access, Private Rooftop, Pet Friendly

Asking price: £9,000 pcm



Queens Gate, SW17 Approx. Gross Internal Area 1831 Sq Ft - 170.10 Sq M



Fourth Floor
For Illustration Purposes Only - Not To Scale

This floor plan should be used as a general outline for guidance only and does not constitute in whole or in part an offer or contract. Any intending purchaser or lessee should satisfy themselves by inspection, searches, enquiries and full survey as to the correctness of each statement. Any areas, measurements or distances quoted are approximate and should not be used to value a property or be the basis of any sale or let.

020 7096 9476

contact@landstones.co.uk

Whilst every effort is made to ensure the accuracy of these details, it should be noted that the measurements are approximate only. Floorplans are for representation purposes only and prepared according to the RICS Code of Measuring Practice by our floorplan provider. Therefore, the layout of doors, windows and rooms are approximate and should be regarded as such by any prospective tenant.