



Warwick Gardens, W14

## Warwick Gardens, W14

A spacious lateral apartment spanning over 2,200 sq. ft. located on the third floor (with lift access) within a well-maintained, portered building in the heart of Kensington.

This family-friendly home features three reception rooms and has been recently refurbished with a neutral interior. Thoughtfully designed, it offers plentiful storage solutions to meet the demands of modern family living, while the principal bedroom benefits from air conditioning for added comfort.

St Mary Abbot's Court enjoys a prime location at the corner of Warwick Gardens and High Street Kensington, providing easy access to an array of shopping, dining, and entertainment options. The nearby open spaces of Holland Park and excellent transport links, including High Street Kensington station.

Deposit: £13,200

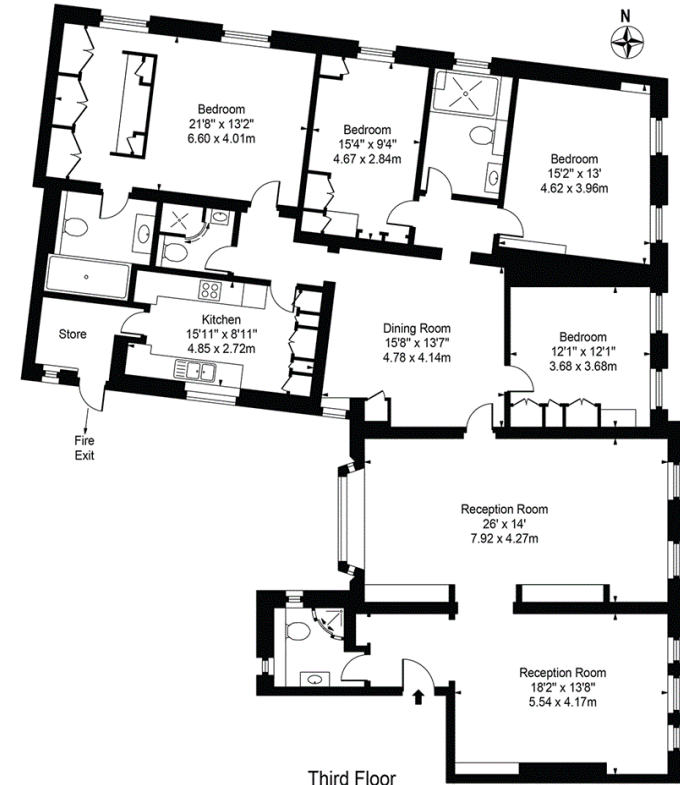
Lateral Apartment , Lift, Air Conditioning, Porter, Good Transport Links

**Asking price:** £2,200 pw



## St. Mary Abbots Court, W14

Approx. Gross Internal Area 2290 Sq Ft - 212.74 Sq M



For Illustration Purposes Only - Not To Scale

This floor plan should be used as a general outline for guidance only and does not constitute in whole or in part an offer or contract. Any intending purchaser or lessee should satisfy themselves by inspection, searches, enquiries and full survey as to the correctness of each statement. Any areas, measurements or distances quoted are approximate and should not be used to value a property or be the basis of any sale or let.

020 7096 9476

contact@landstones.co.uk

Whilst every effort is made to ensure the accuracy of these details, it should be noted that the measurements are approximate only. Floorplans are for representation purposes only and prepared according to the RICS Code of Measuring Practice by our floorplan provider. Therefore, the layout of doors, windows and rooms are approximate and should be regarded as such by any prospective tenant.