



Addison Gardens, W14

Addison Gardens, W14

Recently refurbished to an exceptional standard and elegantly interior designed, this two-bedroom apartment is situated on the raised ground floor of a stunning period building.

Addison Gardens is ideally located on one of the most popular streets in Brook Green with close proximity to the numerous tube lines at Hammersmith Broadway and also the Central line at Shepherds Bush. Westfield shopping complex is also a short walk away.

Council Tax Band: E
Deposit: £3,625

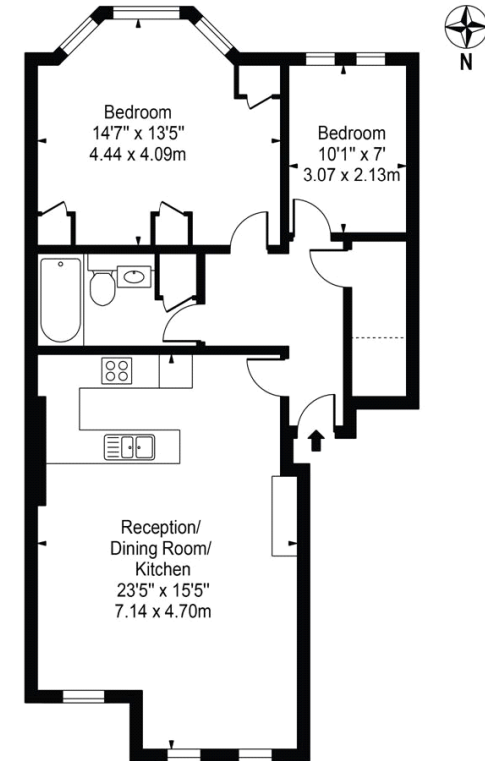
Brand New Refurbished, High Ceilings

Asking price: £725 pw



Addison Gardens

Approx. Gross Internal Area 761 Sq Ft - 70.70 Sq M



For Illustration Purposes Only - Not To Scale

This floor plan should be used as a general outline for guidance only and does not constitute in whole or in part an offer or contract. Any intending purchaser or lessee should satisfy themselves by inspection, searches, enquiries and full survey as to the correctness of each statement. Any areas, measurements or distances quoted are approximate and should not be used to value a property or be the basis of any sale or let.

020 7096 9476

contact@landstones.co.uk

Whilst every effort is made to ensure the accuracy of these details, it should be noted that the measurements are approximate only. Floorplans are for representation purposes only and prepared according to the RICS Code of Measuring Practice by our floorplan provider. Therefore, the layout of doors, windows and rooms are approximate and should be regarded as such by any prospective tenant.