



Notting Hill Gate, W11

## Notting Hill Gate, W11

Set over the 11th and 12th floors (with lift) in this portered high-rise building, the apartment features a lovely reception/dining room with wooden floors leading to a westerly balcony which boasts truly spectacular views across the capital.

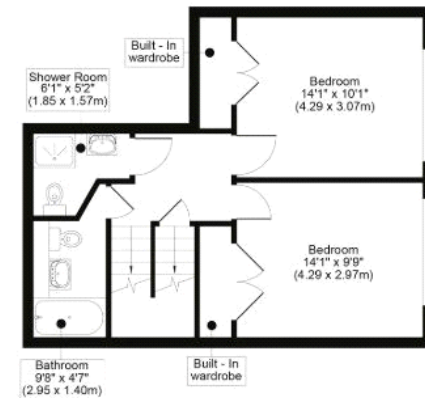
Campden Hill Towers is a very well-maintained modern building ideally positioned on Notting Hill Gate. There are a wealth of fantastic shops, cafes, and restaurants on its doorstep, whilst Portobello Road is very close by as is Westbourne Grove. The Central, Circle and District lines are all easily accessed from Notting Hill Gate tube station, with the vast green open spaces of Kensington Gardens and Hyde Park just moments away.

Deposit: £3,460

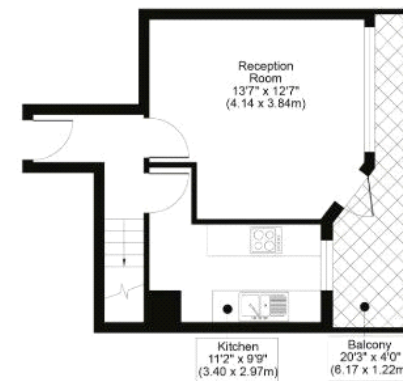
**Asking price:** £692 pw



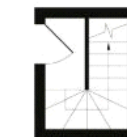
NOTTING HILL GATE, W11  
TOTAL APPROX FLOOR PLAN AREA 706 SQ.FT (66 SQ.M)



TWELFTH FLOOR



ELEVENTH FLOOR



THIRTEENTH FLOOR

Whilst every effort is made to ensure the accuracy of these details, it should be noted that the measurements are approximate only. Floorplans are for representation purposes only and prepared according to the RICS Code of Measuring Practice by our floorplan provider. Therefore, the layout of doors, windows and rooms are approximate and should be regarded as such by any prospective tenant.

020 7096 9476

contact@landstones.co.uk