



Old Brompton Road, SW5

Old Brompton Road, SW5

A recently refurbished four-bedroom lateral apartment in a prestigious portered mansion block with a lift and award-winning communal gardens—an ideal family home!

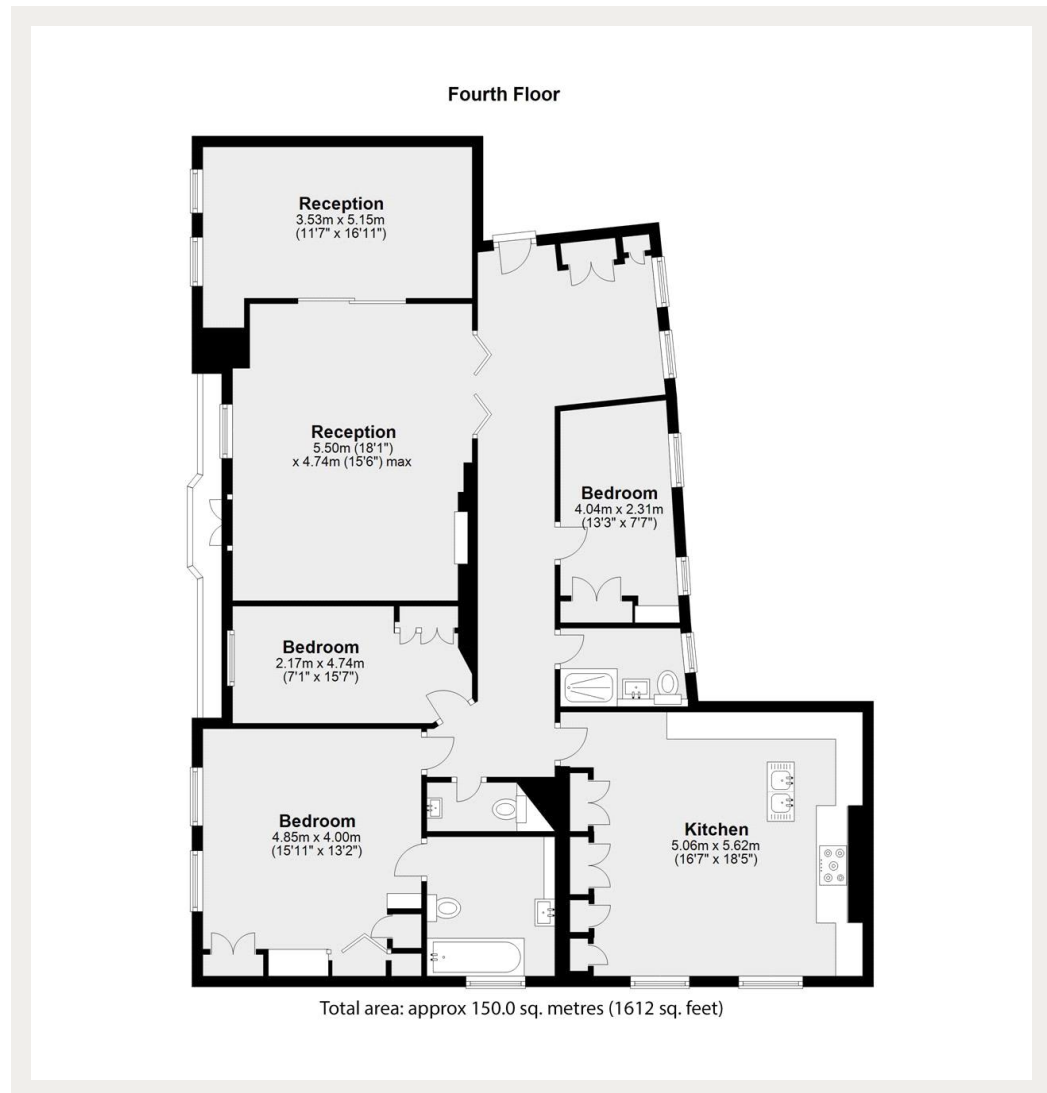
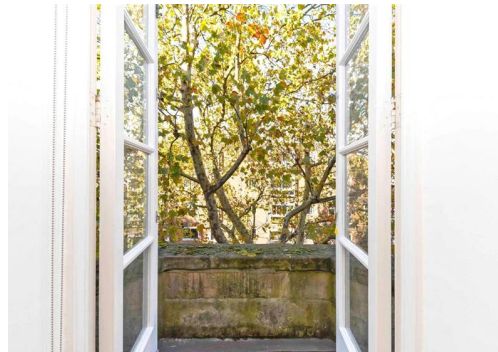
Neutrally decorated throughout and benefiting from generous living space, this property offers the perfect environment for a family seeking comfort and convenience.

The apartment is within the Bousfield catchment area and enjoys easy access to Earl's Court and Gloucester Road tube stations. The vibrant neighbourhoods of South Kensington and Chelsea are also just a short walk away.

Council Tax Band: G (Kensington and Chelsea)
Deposit: £10,500
Garden details: Communal Garden

Communal Garden, Lift Access, Newly Redecorated ,
Porter

Asking price: £1,750 pw



020 7096 9476

contact@landstones.co.uk

Whilst every effort is made to ensure the accuracy of these details, it should be noted that the measurements are approximate only. Floorplans are for representation purposes only and prepared according to the RICS Code of Measuring Practice by our floorplan provider. Therefore, the layout of doors, windows and rooms are approximate and should be regarded as such by any prospective tenant.