



Eaton Place, SW1X

Eaton Place, SW1X

Offered on Short-Let basis, this rare and exceptional property situated on one of London's most prestigious addresses.

An exquisite first-floor lateral corner apartment, refurbished to an exceptional standard. Benefiting from high ceilings and a dual-aspect layout and large windows that flood the space with natural light. The property boasts elegant wood flooring throughout and a stunning reception/dining room with a stylish open-plan kitchen, creating an ideal setting for both relaxing and entertaining. Residents can also enjoy a private terrace, offering a peaceful outdoor retreat in the heart of the city.

Conveniently located just a short stroll from the world-renowned Sloane Street, this home provides unparalleled access to luxury shopping, fine dining, and the amenities of Knightsbridge. The property also benefits from excellent transport connections, with Victoria and Sloane Square stations just moments away.

Deposit: £23,800

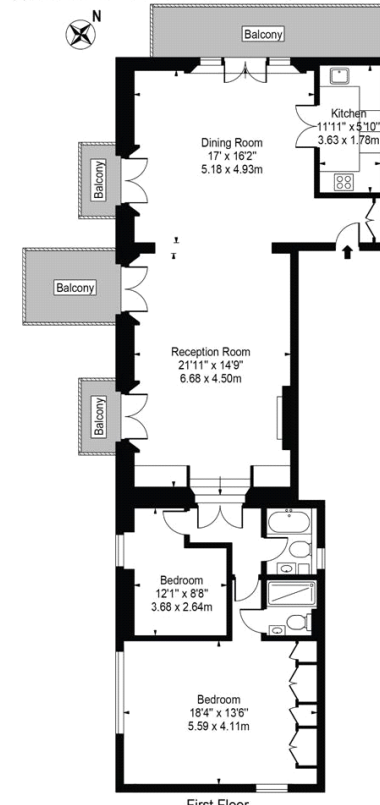
Garden details: Terrace

Short Let, All Bills Inclusive , Pet Friendly

Asking price: £5,500 pw



Eaton Place
Approx. Gross Internal Area 1267 Sq Ft - 117.71 Sq M



First Floor
For Illustration Purposes Only - Not To Scale

This floor plan should be used as a general outline for guidance only and does not constitute in whole or in part an offer or contract. Any intending purchaser or lessee should satisfy themselves by inspection, searches, enquiries and full survey as to the correctness of each statement. Any areas, measurements or distances quoted are approximate and should not be used to value a property or be the basis of any sale or let.

020 7096 9476

contact@landstones.co.uk

Whilst every effort is made to ensure the accuracy of these details, it should be noted that the measurements are approximate only. Floorplans are for representation purposes only and prepared according to the RICS Code of Measuring Practice by our floorplan provider. Therefore, the layout of doors, windows and rooms are approximate and should be regarded as such by any prospective tenant.