



Old Court Place, W8

Old Court Place, W8

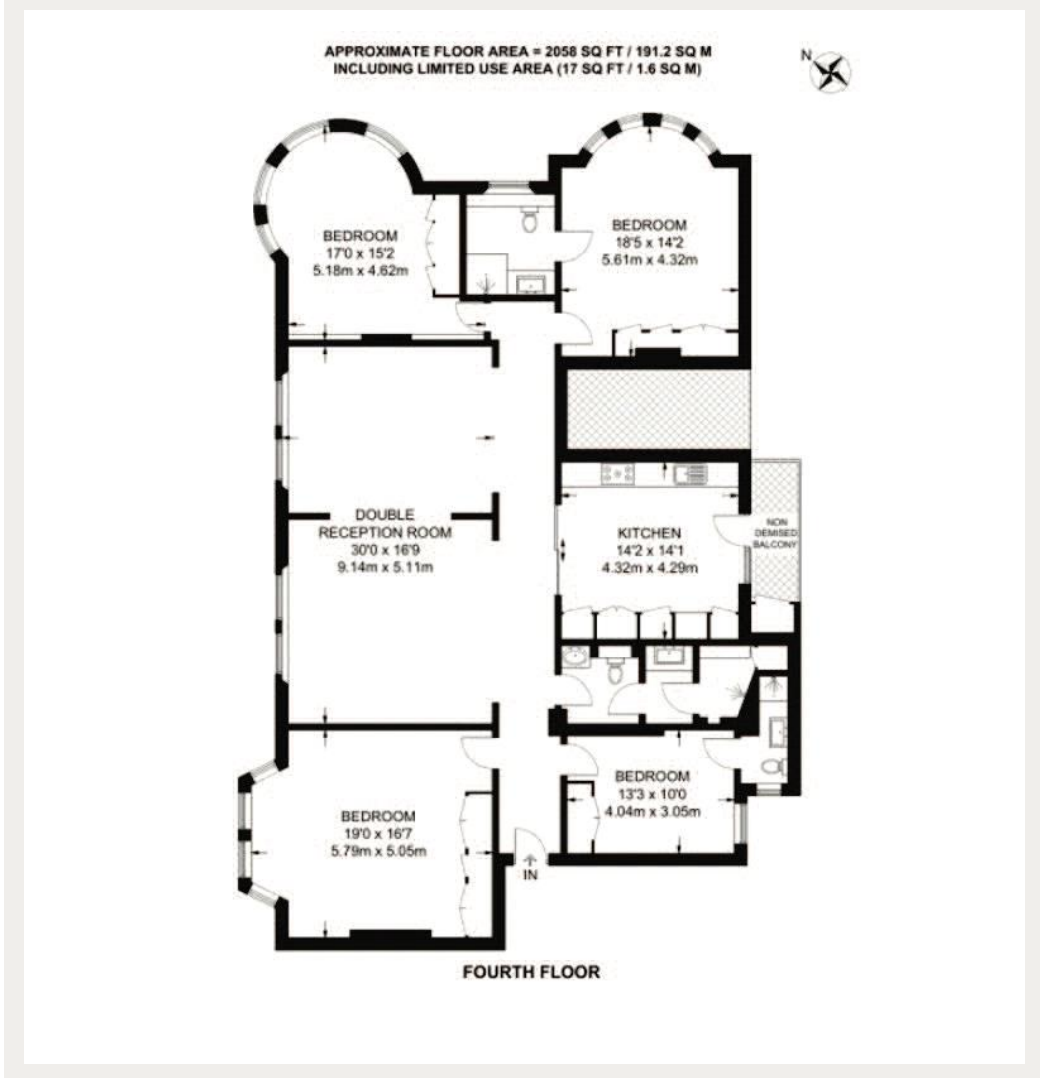
A stunning and well-proportioned four-bedroom lateral family apartment, set within a prestigious and well-maintained portered mansion block in the heart of Kensington.

Situated on the fourth floor, this bright and spacious home is beautifully presented throughout. The property features elegant wooden flooring, a stylishly finished kitchen complete with high-quality Gaggenau appliances, and a large open reception room—perfect for entertaining or relaxed family living.

Ideally located moments from Kensington High Street, residents are spoilt for choice with a vibrant mix of high-street shops, Michelin-starred restaurants, cafés, and bars. The green open spaces of Hyde Park are just a short stroll away, with Kensington High Street station providing excellent transport links across London.

Council Tax Band: H (Kensington and Chelsea)

Asking price: £3,495,000



020 7096 9476

contact@landstones.co.uk

Whilst every effort is made to ensure the accuracy of these details, it should be noted that the measurements are approximate only. Floorplans are for representation purposes only and prepared according to the RICS Code of Measuring Practice by our floorplan provider. Therefore, the layout of doors, windows and rooms are approximate and should be regarded as such by any prospective purchaser. Any internal photographs are intended as a guide only and it should not be assumed that any of the furniture/fittings are included in any sale. Where shown, details of lease, ground rent and service charge are provided by the vendor and their accuracy cannot be guaranteed, as the information may not have been verified and further checks should be made either through your solicitor/conveyance. Where appliances, including central heating, are mentioned, it cannot be assumed that they are in working order, as they have not been tested. Please also note that wiring, plumbing and drains have not been checked.