



Cheval Place, SW7

Cheval Place, SW7

Tucked away on a beautiful mews in the very heart of Knightsbridge, this interior designed three bedroom mews house.

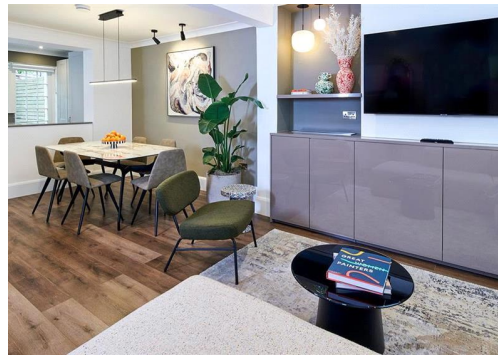
Cheval Place is a quiet mews, found just north of the Brompton Road and moments from Hyde Park. Located for easy access to Harrods and all of the internationally renowned shops and amenities that this hugely vibrant neighbourhood has to offer.

The closest tube station is Knightsbridge (Piccadilly Line) located 0.2 miles from the property.

Deposit: £15,600

Air-Conditioning, All Bills Inclusive , Pet Friendly

Asking price: £2,600 pw



Cheval Knightsbridge Three Bedroom City Cottage 1124 Sq Ft / 104 Sq M



Please note that diagrams are not to scale
and all measurements are approximate.

020 7096 9476

contact@landstones.co.uk

Whilst every effort is made to ensure the accuracy of these details, it should be noted that the measurements are approximate only. Floorplans are for representation purposes only and prepared according to the RICS Code of Measuring Practice by our floorplan provider. Therefore, the layout of doors, windows and rooms are approximate and should be regarded as such by any prospective tenant.