



Stafford Terrace, W8

Stafford Terrace, W8

A modern three bedroom apartment arranged on the garden level of this magnificent period conversion building. The property boasts a guest room/separate study along with a terrace at the rear of block.

Stratford Terrace is located close to High Street Kensington with a variety of restaurants, cafes and shops. The green spaces of Holland Park and Kensington Gardens are a short stroll away. The nearest underground station is Kensington High Street (District and Circle lines). Motorists will benefit from rapid routes to the West and Heathrow Airport via M4.

Deposit: £4,750

Garden details: Private Garden

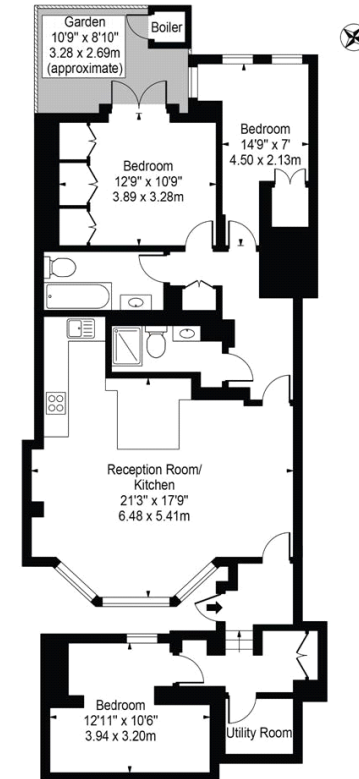
Pet Friendly

Asking price: £950 pw



Stafford Terrace

Approx. Gross Internal Area 1027 Sq Ft - 95.41 Sq M



Lower Ground Floor
For Illustration Purposes Only - Not To Scale

This floor plan should be used as a general outline for guidance only and does not constitute in whole or in part an offer or contract. Any intending purchaser or lessee should satisfy themselves by inspection, searches, enquiries and full survey as to the correctness of each statement. Any areas, measurements or distances quoted are approximate and should not be used to value a property or be the basis of any sale or let.

020 7096 9476

contact@landstones.co.uk

Whilst every effort is made to ensure the accuracy of these details, it should be noted that the measurements are approximate only. Floorplans are for representation purposes only and prepared according to the RICS Code of Measuring Practice by our floorplan provider. Therefore, the layout of doors, windows and rooms are approximate and should be regarded as such by any prospective tenant.